

Datasheet for ABIN7295760
anti-GJB1 antibody (Center)[Go to Product page](#)

2 Images

Overview

Quantity:	100 µL
Target:	GJB1
Binding Specificity:	Center
Reactivity:	Human, Rat, Mouse, Dog, Cow, Monkey, Pig
Host:	Rabbit
Clonality:	Polyclonal
Conjugate:	This GJB1 antibody is un-conjugated
Application:	Western Blotting (WB), Immunohistochemistry (IHC)

Product Details

Immunogen:	KLH-conjugated synthetic peptide encompassing a sequence within the center region of human Connexin 32.
Specificity:	Recognizes endogenous levels of Connexin 32 protein.
Characteristics:	Rabbit polyclonal antibody to Connexin 32
Purification:	The antibody was purified by immunogen affinity chromatography.

Target Details

Target:	GJB1
Alternative Name:	Connexin 32 (GJB1 Products)
Background:	CX32, Gap junction beta-1 protein, Connexin-32, Cx32, GAP junction 28 kDa liver protein

Target Details

Gene ID:	2705, 14618, 29584
UniProt:	P08034 , P28230 , P08033
Pathways:	Cell-Cell Junction Organization

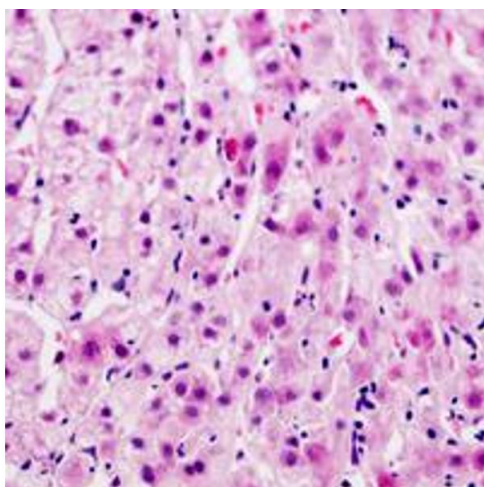
Application Details

Application Notes:	WB (1:500 - 1:1000), IH (1:100 - 1:200)
Restrictions:	For Research Use only

Handling

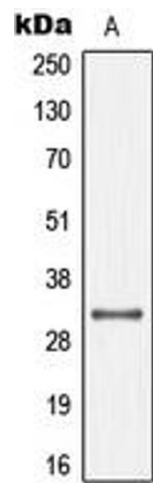
Format:	Liquid
Buffer:	Liquid in 0.42 % Potassium phosphate, 0.87 % Sodium chloride, pH 7.3, 30 % glycerol, and 0.01 % sodium azide.
Preservative:	Sodium azide
Precaution of Use:	This product contains Sodium azide: a POISONOUS AND HAZARDOUS SUBSTANCE which should be handled by trained staff only.
Storage:	-20 °C
Storage Comment:	Shipped at 4°C. Upon delivery aliquot and store at -20°C for one year. Avoid freeze/thaw cycles.
Expiry Date:	12 months

Images



Immunohistochemistry

Image 1. Immunohistochemical analysis of Connexin 32 staining in human liver cancer formalin fixed paraffin embedded tissue section. The section was pre-treated using heat mediated antigen retrieval with sodium citrate buffer (pH 6.0). The section was then incubated with the antibody at room temperature and detected using an HRP conjugated compact polymer system. AEC was used as the chromogen. The section was then counterstained with haematoxylin and mounted with DPX.



Western Blotting

Image 2. Western blot analysis of Connexin 32 expression in MCF7 (A) whole cell lysates.