



[Go to Product page](#)

Datasheet for ABIN7295764

anti-Glycerol Kinase 1 antibody (C-Term)

2 Images

Overview

Quantity:	100 µL
Target:	Glycerol Kinase 1
Binding Specificity:	C-Term
Reactivity:	Human, Cow, Mouse, Rat, Dog, Pig
Host:	Rabbit
Clonality:	Polyclonal
Conjugate:	This Glycerol Kinase 1 antibody is un-conjugated
Application:	Western Blotting (WB), Immunofluorescence (IF), Immunochromatography (IC)

Product Details

Immunogen:	KLH-conjugated synthetic peptide encompassing a sequence within the C-term region of human Glycerol Kinase 1.
Specificity:	Recognizes endogenous levels of Glycerol Kinase 1 protein.
Characteristics:	Rabbit polyclonal antibody to Glycerol Kinase 1
Purification:	The antibody was purified by immunogen affinity chromatography.

Target Details

Target:	Glycerol Kinase 1
Abstract:	Glycerol Kinase 1 Products
Background:	Glycerol kinase, GK, Glycerokinase, ATP:glycerol 3-phosphotransferase

Target Details

Gene ID: 2710, 14933, 79223

UniProt: [P32189](#), [Q64516](#), [Q63060](#)

Application Details

Application Notes: WB (1:500 - 1:1000), IF/IC (1:100 - 1:500)

Restrictions: For Research Use only

Handling

Format: Liquid

Buffer: Liquid in 0.42 % Potassium phosphate, 0.87 % Sodium chloride, pH 7.3, 30 % glycerol, and 0.01 % sodium azide.

Preservative: Sodium azide

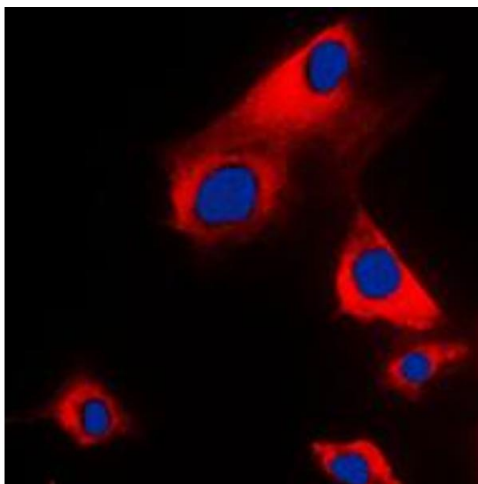
Precaution of Use: This product contains Sodium azide: a POISONOUS AND HAZARDOUS SUBSTANCE which should be handled by trained staff only.

Storage: -20 °C

Storage Comment: Shipped at 4°C. Upon delivery aliquot and store at -20°C for one year. Avoid freeze/thaw cycles.

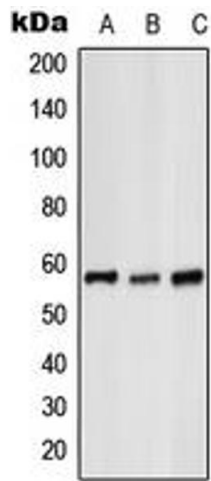
Expiry Date: 12 months

Images



Immunofluorescence

Image 1. Immunofluorescent analysis of Glycerol Kinase 1 staining in H9C2 cells. Formalin-fixed cells were permeabilized with 0.1% Triton X-100 in TBS for 5-10 minutes and blocked with 3% BSA-PBS for 30 minutes at room temperature. Cells were probed with the primary antibody in 3% BSA-PBS and incubated overnight at 4 °C in a humidified chamber. Cells were washed with PBST and incubated with a DyLight 594-conjugated secondary antibody (red) in PBS at room temperature in the dark. DAPI was used to stain the cell nuclei (blue).



Western Blotting

Image 2. Western blot analysis of Glycerol Kinase 1 expression in HeLa (A), mouse liver (B), H9C2 (C) whole cell lysates.