

Datasheet for ABIN7295766
anti-GK2 antibody (Center)

2 Images

[Go to Product page](#)

Overview

Quantity:	100 µL
Target:	GK2
Binding Specificity:	Center
Reactivity:	Human
Host:	Rabbit
Clonality:	Polyclonal
Conjugate:	This GK2 antibody is un-conjugated
Application:	Western Blotting (WB), Immunofluorescence (IF), Immunoprecipitation (IP), Immunochromatography (IC)

Product Details

Immunogen:	KLH-conjugated synthetic peptide encompassing a sequence within the center region of human Glycerol Kinase 2.
Specificity:	Recognizes endogenous levels of Glycerol Kinase 2 protein.
Characteristics:	Rabbit polyclonal antibody to Glycerol Kinase 2
Purification:	The antibody was purified by immunogen affinity chromatography.

Target Details

Target:	GK2
Alternative Name:	Glycerol Kinase 2 (GK2 Products)

Target Details

Background:	GKP2, GKTA, Glycerol kinase 2, GK 2, Glycerokinase 2, ATP:glycerol 3-phosphotransferase 2, Glycerol kinase, testis specific 2
Gene ID:	2712
UniProt:	Q14410

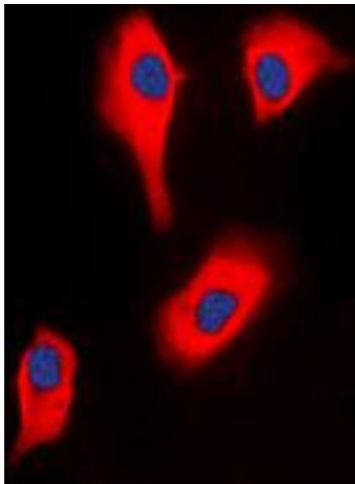
Application Details

Application Notes:	WB (1:500 - 1:1000), IF/IC (1:100 - 1:500), IP (1:10 - 1:100)
Restrictions:	For Research Use only

Handling

Format:	Liquid
Buffer:	Liquid in 0.42 % Potassium phosphate, 0.87 % Sodium chloride, pH 7.3, 30 % glycerol, and 0.01 % sodium azide.
Preservative:	Sodium azide
Precaution of Use:	This product contains Sodium azide: a POISONOUS AND HAZARDOUS SUBSTANCE which should be handled by trained staff only.
Storage:	-20 °C
Storage Comment:	Shipped at 4°C. Upon delivery aliquot and store at -20°C for one year. Avoid freeze/thaw cycles.
Expiry Date:	12 months

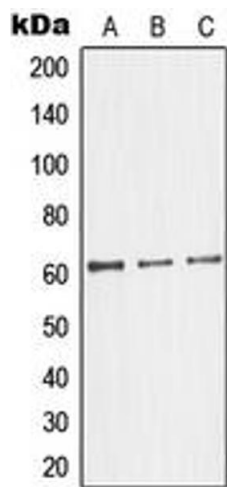
Images



Immunofluorescence

Image 1. Immunofluorescent analysis of Glycerol Kinase 2 staining in HeLa cells. Formalin-fixed cells were permeabilized with 0.1% Triton X-100 in TBS for 5-10 minutes and blocked with 3% BSA-PBS for 30 minutes at room temperature. Cells were probed with the primary antibody in 3% BSA-PBS and incubated overnight at 4 °C in a humidified chamber. Cells were washed with PBST and incubated with a DyLight 594-conjugated secondary

antibody (red) in PBS at room temperature in the dark. DAPI was used to stain the cell nuclei (blue).



Western Blotting

Image 2. Western blot analysis of Glycerol Kinase 2 expression in HepG2 (A), HeLa (B), Jurkat (C) whole cell lysates.