

Datasheet for ABIN7295794
anti-GPR18 antibody (Center)

2 Images

[Go to Product page](#)

Overview

Quantity:	100 µL
Target:	GPR18
Binding Specificity:	Center
Reactivity:	Human, Mouse, Rat, Monkey
Host:	Rabbit
Clonality:	Polyclonal
Conjugate:	This GPR18 antibody is un-conjugated
Application:	Western Blotting (WB), Immunofluorescence (IF), Immunochromatography (IC)

Product Details

Immunogen:	KLH-conjugated synthetic peptide encompassing a sequence within the center region of human GPR18.
Specificity:	Recognizes endogenous levels of GPR18 protein.
Characteristics:	Rabbit polyclonal antibody to GPR18
Purification:	The antibody was purified by immunogen affinity chromatography.

Target Details

Target:	GPR18
Alternative Name:	GPR18 (GPR18 Products)
Background:	GPCRW, N-arachidonyl glycine receptor, NAGly receptor, G-protein coupled receptor 18

Target Details

Gene ID:	2841, 110168, 679957
UniProt:	Q14330 , Q8K1Z6 , A1A5S3

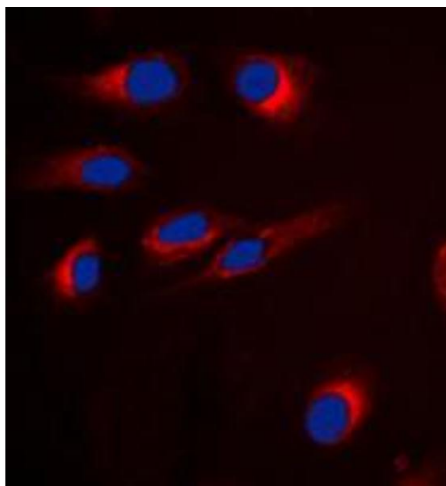
Application Details

Application Notes:	WB (1:500 - 1:1000), IF/IC (1:100 - 1:500)
Restrictions:	For Research Use only

Handling

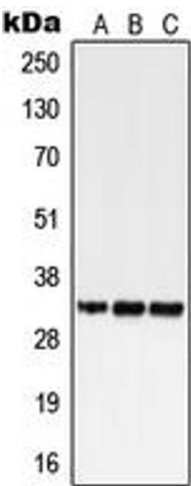
Format:	Liquid
Buffer:	Liquid in 0.42 % Potassium phosphate, 0.87 % Sodium chloride, pH 7.3, 30 % glycerol, and 0.01 % sodium azide.
Preservative:	Sodium azide
Precaution of Use:	This product contains Sodium azide: a POISONOUS AND HAZARDOUS SUBSTANCE which should be handled by trained staff only.
Storage:	-20 °C
Storage Comment:	Shipped at 4°C. Upon delivery aliquot and store at -20°C for one year. Avoid freeze/thaw cycles.
Expiry Date:	12 months

Images



Immunofluorescence

Image 1. Immunofluorescent analysis of GPR18 staining in H9C2 cells. Formalin-fixed cells were permeabilized with 0.1% Triton X-100 in TBS for 5-10 minutes and blocked with 3% BSA-PBS for 30 minutes at room temperature. Cells were probed with the primary antibody in 3% BSA-PBS and incubated overnight at 4 °C in a humidified chamber. Cells were washed with PBST and incubated with a DyLight 594-conjugated secondary antibody (red) in PBS at room temperature in the dark. DAPI was used to stain the cell nuclei (blue).



Western Blotting

Image 2. Western blot analysis of GPR18 expression in HEK293T (A), SP2/O (B), H9C2 (C) whole cell lysates.