

Datasheet for ABIN7295812

**anti-GRB10 antibody (N-Term, pTyr67)****2** Images[Go to Product page](#)

## Overview

Quantity:	100 µL
Target:	GRB10
Binding Specificity:	N-Term, pTyr67
Reactivity:	Human, Mouse, Rat
Host:	Rabbit
Clonality:	Polyclonal
Conjugate:	This GRB10 antibody is un-conjugated
Application:	Western Blotting (WB), Immunofluorescence (IF), Immunochromatography (IC)

## Product Details

Immunogen:	KLH-conjugated synthetic peptide encompassing a sequence within the N-term region of human GRB10.
Specificity:	Recognizes endogenous levels of GRB10 (pY67) protein.
Characteristics:	Rabbit polyclonal antibody to GRB10 (pY67)
Purification:	The antibody was purified by immunogen affinity chromatography.

## Target Details

Target:	GRB10
Alternative Name:	GRB10 ( <a href="#">GRB10 Products</a> )
Background:	GRBIR, KIAA0207, Growth factor receptor-bound protein 10, GRB10 adapter protein, Insulin

### Target Details

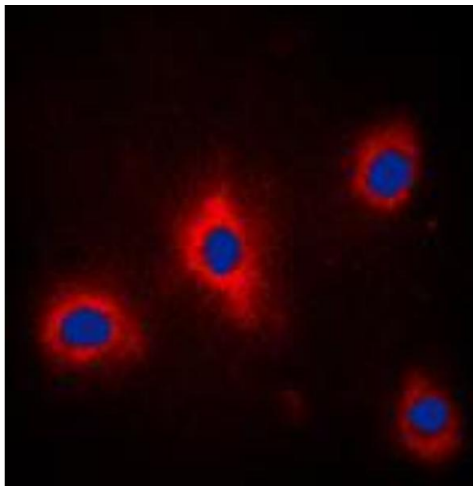
	receptor-binding protein Grb-IR
Gene ID:	2887, 14783, 498416
UniProt:	<a href="#">Q13322</a> , <a href="#">Q60760</a> , <a href="#">P0CE43</a>
Pathways:	<a href="#">Regulation of Carbohydrate Metabolic Process</a> , <a href="#">Signaling Events mediated by VEGFR1 and VEGFR2</a>

### Application Details

Application Notes:	WB (1:500 - 1:1000), IF/IC (1:100 - 1:500)
Restrictions:	For Research Use only

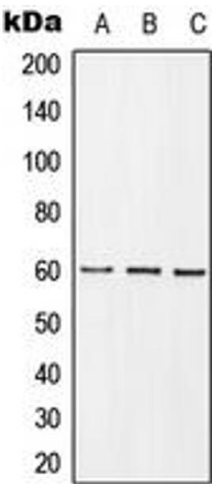
### Handling

Format:	Liquid
Buffer:	Liquid in 0.42 % Potassium phosphate, 0.87 % Sodium chloride, pH 7.3, 30 % glycerol, and 0.01 % sodium azide.
Preservative:	Sodium azide
Precaution of Use:	This product contains Sodium azide: a POISONOUS AND HAZARDOUS SUBSTANCE which should be handled by trained staff only.
Storage:	-20 °C
Storage Comment:	Shipped at 4°C. Upon delivery aliquot and store at -20°C for one year. Avoid freeze/thaw cycles.
Expiry Date:	12 months



### Immunofluorescence

**Image 1.** Immunofluorescent analysis of GRB10 (pY67) staining in PC12 cells. Formalin-fixed cells were permeabilized with 0.1% Triton X-100 in TBS for 5-10 minutes and blocked with 3% BSA-PBS for 30 minutes at room temperature. Cells were probed with the primary antibody in 3% BSA-PBS and incubated overnight at 4 °C in a humidified chamber. Cells were washed with PBST and incubated with a DyLight 594-conjugated secondary antibody (red) in PBS at room temperature in the dark. DAPI was used to stain the cell nuclei (blue).



### Western Blotting

**Image 2.** Western blot analysis of GRB10 (pY67) expression in HEK293T insulin-treated (A), mouse spleen (B), PC12 insulin-treated (C) whole cell lysates.