

Datasheet for ABIN7295826

anti-Metabotropic Glutamate Receptor 4 antibody (C-Term)[Go to Product page](#)**3** Images

Overview

Quantity:	100 µL
Target:	Metabotropic Glutamate Receptor 4 (GRM4)
Binding Specificity:	C-Term
Reactivity:	Human, Mouse, Rat, Monkey, Chicken
Host:	Rabbit
Clonality:	Polyclonal
Conjugate:	This Metabotropic Glutamate Receptor 4 antibody is un-conjugated
Application:	Western Blotting (WB), Immunohistochemistry (IHC), Immunofluorescence (IF), Immunochromatography (IC)

Product Details

Immunogen:	KLH-conjugated synthetic peptide encompassing a sequence within the C-term region of human mGLUR4.
Specificity:	Recognizes endogenous levels of mGLUR4 protein.
Characteristics:	Rabbit polyclonal antibody to mGLUR4
Purification:	The antibody was purified by immunogen affinity chromatography.

Target Details

Target:	Metabotropic Glutamate Receptor 4 (GRM4)
Alternative Name:	mGLUR4 (GRM4 Products)

Target Details

Background:	GPRC1D, MGLUR4, Metabotropic glutamate receptor 4, mGluR4
Gene ID:	2914, 268934, 24417
UniProt:	Q14833 , Q68EF4 , P31423

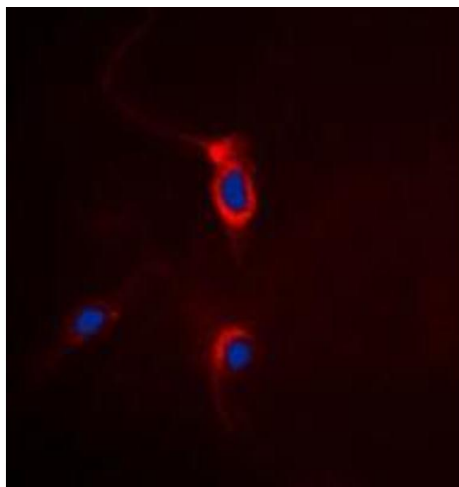
Application Details

Application Notes:	WB (1:500 - 1:1000), IH (1:100 - 1:200), IF/IC (1:100 - 1:500)
Restrictions:	For Research Use only

Handling

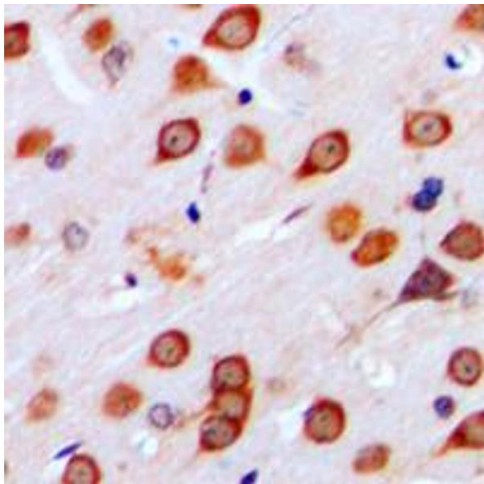
Format:	Liquid
Buffer:	Liquid in 0.42 % Potassium phosphate, 0.87 % Sodium chloride, pH 7.3, 30 % glycerol, and 0.01 % sodium azide.
Preservative:	Sodium azide
Precaution of Use:	This product contains Sodium azide: a POISONOUS AND HAZARDOUS SUBSTANCE which should be handled by trained staff only.
Storage:	-20 °C
Storage Comment:	Shipped at 4°C. Upon delivery aliquot and store at -20°C for one year. Avoid freeze/thaw cycles.
Expiry Date:	12 months

Images



Immunofluorescence

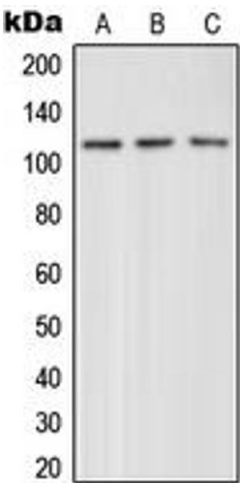
Image 1. Immunofluorescent analysis of mGluR4 staining in HeLa cells. Formalin-fixed cells were permeabilized with 0.1% Triton X-100 in TBS for 5-10 minutes and blocked with 3% BSA-PBS for 30 minutes at room temperature. Cells were probed with the primary antibody in 3% BSA-PBS and incubated overnight at 4 °C in a humidified chamber. Cells were washed with PBST and incubated with a DyLight 594-conjugated secondary antibody (red) in PBS at room temperature in the dark. DAPI was used to stain the cell



nuclei (blue).

Immunohistochemistry

Image 2. Immunohistochemical analysis of mGLUR4 staining in human brain formalin fixed paraffin embedded tissue section. The section was pre-treated using heat mediated antigen retrieval with sodium citrate buffer (pH 6.0). The section was then incubated with the antibody at room temperature and detected using an HRP conjugated compact polymer system. DAB was used as the chromogen. The section was then counterstained with haematoxylin and mounted with DPX.



Western Blotting

Image 3. Western blot analysis of mGLUR4 expression in HeLa (A), mouse brain (B), rat brain (C) whole cell lysates.