

Datasheet for ABIN729583

anti-RPSA/Laminin Receptor antibody (AA 101-200)**2** Images**1** Publication[Go to Product page](#)

Overview

Quantity:	100 µL
Target:	RPSA/Laminin Receptor (RPSA)
Binding Specificity:	AA 101-200
Reactivity:	Human, Mouse, Rat
Host:	Rabbit
Clonality:	Polyclonal
Conjugate:	This RPSA/Laminin Receptor antibody is un-conjugated
Application:	Western Blotting (WB), ELISA, Immunohistochemistry (Paraffin-embedded Sections) (IHC (p)), Flow Cytometry (FACS), Immunohistochemistry (Frozen Sections) (IHC (fro)), Immunofluorescence (Cultured Cells) (IF (cc)), Immunofluorescence (Paraffin-embedded Sections) (IF (p))

Product Details

Immunogen:	KLH conjugated synthetic peptide derived from human LAMR1
Isotype:	IgG
Cross-Reactivity:	Human, Mouse, Rat
Predicted Reactivity:	Dog
Purification:	Purified by Protein A.

Target Details

Target:	RPSA/Laminin Receptor (RPSA)
---------	------------------------------

Target Details

Alternative Name:	LAMR1 (RPSA Products)
Background:	<p>Synonyms: 40S ribosomal protein SA, 37 kDa laminin receptor precursor, 37LRP, 37/67 kDa laminin receptor, LRP/LR, 67 kDa laminin receptor, 67LR, Colon carcinoma laminin-binding protein, Laminin receptor 1, LamR, Laminin-binding protein precursor p40, LBP/p40, Multidrug resistance-associated protein MGr1-Ag, NEM/1CHD4, RPSA, LAMBR, LAMR1</p> <p>Background: Required for the assembly and/or stability of the 40S ribosomal subunit. Required for the processing of the 20S rRNA-precursor to mature 18S rRNA in a late step of the maturation of 40S ribosomal subunits. Also functions as a cell surface receptor for laminin. Plays a role in cell adhesion to the basement membrane and in the consequent activation of signaling transduction pathways. May play a role in cell fate determination and tissue morphogenesis. Acts as a PPP1R16B-dependent substrate of PPP1CA. Also acts as a receptor for several other ligands, including the pathogenic prion protein, viruses, and bacteria.</p>
Gene ID:	3921
UniProt:	P08865
Pathways:	Ribonucleoprotein Complex Subunit Organization , Ribosome Assembly

Application Details

Application Notes:	WB 1:300-5000 ELISA 1:500-1000 FCM 1:20-100 IHC-P 1:200-400 IHC-F 1:100-500 IF(IHC-P) 1:50-200 IF(IHC-F) 1:50-200 IF(ICC) 1:50-200
Restrictions:	For Research Use only

Handling

Format:	Liquid
Concentration:	1 µg/µL
Buffer:	0.01M TBS(pH 7.4) with 1 % BSA, 0.02 % Proclin300 and 50 % Glycerol.
Preservative:	ProClin

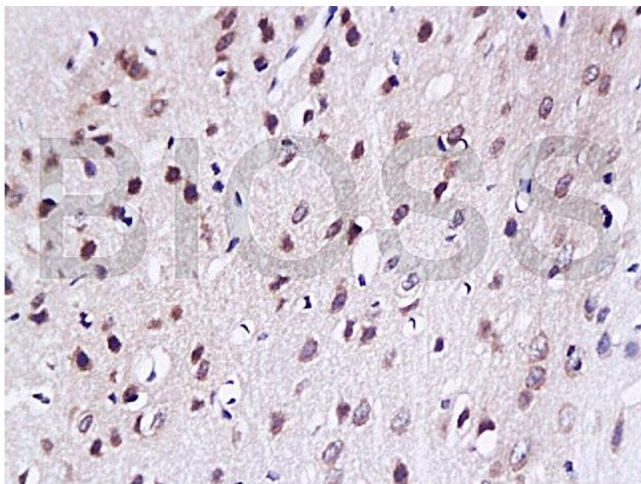
Handling

Precaution of Use:	This product contains ProClin: a POISONOUS AND HAZARDOUS SUBSTANCE, which should be handled by trained staff only.
Storage:	4 °C, -20 °C
Storage Comment:	Shipped at 4°C. Store at -20°C for one year. Avoid repeated freeze/thaw cycles.
Expiry Date:	12 months

Publications

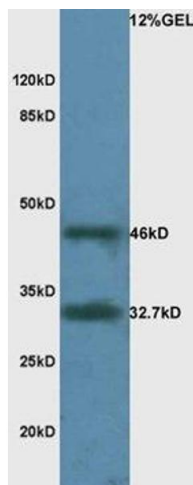
Product cited in:	Umbaugh, Diaz-Quiñones, Neto, Shearer, Figueiredo: "A dock derived compound against laminin receptor (37 LR) exhibits anti-cancer properties in a prostate cancer cell line model." in: Oncotarget , Vol. 9, Issue 5, pp. 5958-5978, (2018) (PubMed).
-------------------	--

Images



Immunohistochemistry

Image 1. Formalin-fixed and paraffin embedded rat brain tissue labeled with Anti-LAMR1 Polyclonal Antibody, unconjugated (ABIN729583) at 1: 200, followed by incubation with conjugated secondary antibody and DAB staining



Western Blotting

Image 2. Mouse brain lysate probed with Rabbit Anti-LAMR1 Polyclonal Antibody, Unconjugated at 1:3000 for 90 min at 37°C.