

Datasheet for ABIN7295834
anti-GRM8 antibody (C-Term)



[Go to Product page](#)

1 Image

Overview

Quantity:	100 µL
Target:	GRM8
Binding Specificity:	C-Term
Reactivity:	Human, Mouse, Rat, Monkey, Rabbit, Pig
Host:	Rabbit
Clonality:	Polyclonal
Conjugate:	This GRM8 antibody is un-conjugated
Application:	Western Blotting (WB)

Product Details

Immunogen:	KLH-conjugated synthetic peptide encompassing a sequence within the C-term region of human mGLUR8.
Specificity:	Recognizes endogenous levels of mGLUR8 protein.
Characteristics:	Rabbit polyclonal antibody to mGLUR8
Purification:	The antibody was purified by immunogen affinity chromatography.

Target Details

Target:	GRM8
Alternative Name:	mGLUR8 (GRM8 Products)
Background:	GPRC1H, MGLUR8, Metabotropic glutamate receptor 8, mGluR8

Target Details

Gene ID:	2918, 14823, 60590
UniProt:	O00222 , P47743 , P70579
Pathways:	cAMP Metabolic Process , Synaptic Membrane

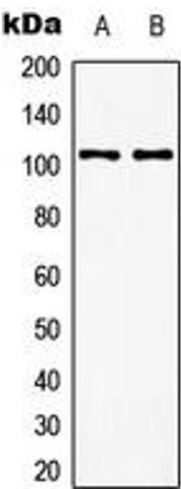
Application Details

Application Notes:	WB (1:500 - 1:1000)
Restrictions:	For Research Use only

Handling

Format:	Liquid
Buffer:	Liquid in 0.42 % Potassium phosphate, 0.87 % Sodium chloride, pH 7.3, 30 % glycerol, and 0.01 % sodium azide.
Preservative:	Sodium azide
Precaution of Use:	This product contains Sodium azide: a POISONOUS AND HAZARDOUS SUBSTANCE which should be handled by trained staff only.
Storage:	-20 °C
Storage Comment:	Shipped at 4°C. Upon delivery aliquot and store at -20°C for one year. Avoid freeze/thaw cycles.
Expiry Date:	12 months

Validation report #103814 for Western Blotting (WB)



Western Blotting

Image 1. Western blot analysis of mGLUR8 expression in EOC20 (A), rat brain (B) whole cell lysates.