



Datasheet for ABIN7295838

## anti-GSK3 alpha antibody (N-Term, pSer21)



[Go to Product page](#)

### 3 Images

#### Overview

Quantity:	100 µL
Target:	GSK3 alpha (GSK3a)
Binding Specificity:	N-Term, pSer21
Reactivity:	Human, Mouse, Rat
Host:	Rabbit
Clonality:	Polyclonal
Conjugate:	This GSK3 alpha antibody is un-conjugated
Application:	Western Blotting (WB), Immunohistochemistry (IHC), Immunoprecipitation (IP), Immunofluorescence (IF), Immunochromatography (IC)

#### Product Details

Immunogen:	KLH-conjugated synthetic peptide encompassing a sequence within the N-term region of human GSK3 alpha.
Specificity:	Recognizes endogenous levels of GSK3 alpha (pS21) protein.
Characteristics:	Rabbit polyclonal antibody to GSK3 alpha (pS21)
Purification:	The antibody was purified by immunogen affinity chromatography.

#### Target Details

Target:	GSK3 alpha (GSK3a)
Alternative Name:	GSK3 alpha ( <a href="#">GSK3a Products</a> )

## Target Details

---

Background:	Glycogen synthase kinase-3 alpha, GSK-3 alpha, Serine/threonine-protein kinase GSK3A
Gene ID:	2931, 606496, 50686
UniProt:	<a href="#">P49840</a> , <a href="#">Q2NL51</a> , <a href="#">P18265</a>
Pathways:	<a href="#">PI3K-Akt Signaling</a> , <a href="#">WNT Signaling</a> , <a href="#">Fc-epsilon Receptor Signaling Pathway</a> , <a href="#">EGFR Signaling Pathway</a> , <a href="#">Neurotrophin Signaling Pathway</a> , <a href="#">cAMP Metabolic Process</a> , <a href="#">Cellular Glucan Metabolic Process</a> , <a href="#">Regulation of Muscle Cell Differentiation</a> , <a href="#">Regulation of G-Protein Coupled Receptor Protein Signaling</a> , <a href="#">ER-Nucleus Signaling</a> , <a href="#">Regulation of Carbohydrate Metabolic Process</a> , <a href="#">BCR Signaling</a> , <a href="#">Warburg Effect</a>

## Application Details

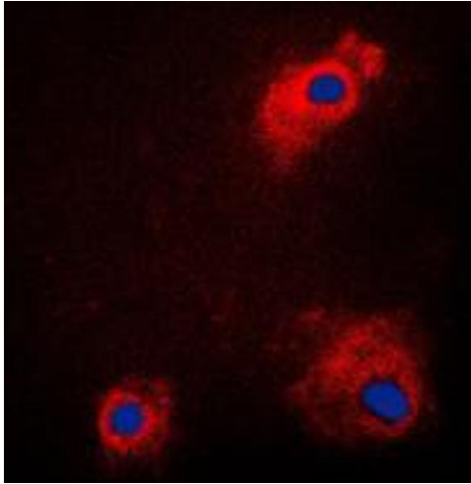
---

Application Notes:	WB (1:500 - 1:1000), IH (1:100 - 1:200), IF/IC (1:100 - 1:500), IP (1:10 - 1:100)
Restrictions:	For Research Use only

## Handling

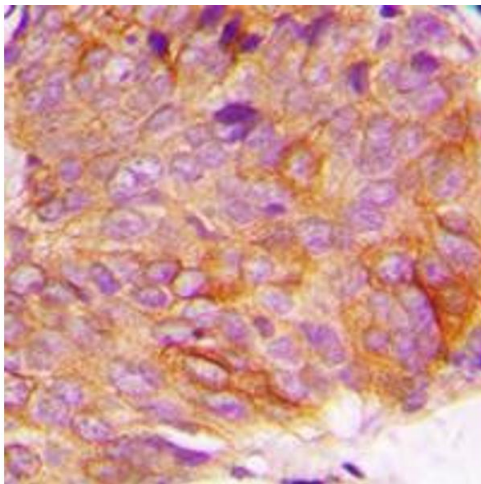
---

Format:	Liquid
Buffer:	Liquid in 0.42 % Potassium phosphate, 0.87 % Sodium chloride, pH 7.3, 30 % glycerol, and 0.01 % sodium azide.
Preservative:	Sodium azide
Precaution of Use:	This product contains Sodium azide: a POISONOUS AND HAZARDOUS SUBSTANCE which should be handled by trained staff only.
Storage:	-20 °C
Storage Comment:	Shipped at 4°C. Upon delivery aliquot and store at -20°C for one year. Avoid freeze/thaw cycles.
Expiry Date:	12 months



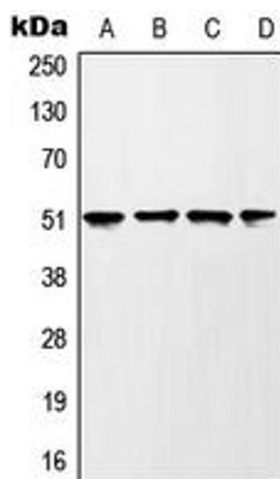
### Immunofluorescence

**Image 1.** Immunofluorescent analysis of GSK3 alpha (pS21) staining in PC12 cells. Formalin-fixed cells were permeabilized with 0.1% Triton X-100 in TBS for 5-10 minutes and blocked with 3% BSA-PBS for 30 minutes at room temperature. Cells were probed with the primary antibody in 3% BSA-PBS and incubated overnight at 4 °C in a humidified chamber. Cells were washed with PBST and incubated with a DyLight 594-conjugated secondary antibody (red) in PBS at room temperature in the dark. DAPI was used to stain the cell nuclei (blue).



### Immunohistochemistry

**Image 2.** Immunohistochemical analysis of GSK3 alpha (pS21) staining in human breast cancer formalin fixed paraffin embedded tissue section. The section was pre-treated using heat mediated antigen retrieval with sodium citrate buffer (pH 6.0). The section was then incubated with the antibody at room temperature and detected using an HRP conjugated compact polymer system. DAB was used as the chromogen. The section was then counterstained with haematoxylin and mounted with DPX.



### Western Blotting

**Image 3.** Western blot analysis of GSK3 alpha (pS21) expression in HEK293T UV-treated (A), mouse liver (B), rat liver (C), PC12 H<sub>2</sub>O<sub>2</sub>-treated (D) whole cell lysates.