

Datasheet for ABIN7295856
anti-GUCY1B3 antibody (N-Term)[Go to Product page](#)

2 Images

Overview

Quantity:	100 µL
Target:	GUCY1B3
Binding Specificity:	N-Term
Reactivity:	Human, Mouse, Rat, Dog, Cow, Pig
Host:	Rabbit
Clonality:	Polyclonal
Conjugate:	This GUCY1B3 antibody is un-conjugated
Application:	Western Blotting (WB), Immunohistochemistry (IHC)

Product Details

Immunogen:	KLH-conjugated synthetic peptide encompassing a sequence within the N-term region of human GUCY1B3.
Specificity:	Recognizes endogenous levels of GUCY1B3 protein.
Characteristics:	Rabbit polyclonal antibody to GUCY1B3
Purification:	The antibody was purified by immunogen affinity chromatography.

Target Details

Target:	GUCY1B3
Alternative Name:	GUCY1B3 (GUCY1B3 Products)
Background:	GUC1B3, GUCSB3, GUCY1B1, Guanylate cyclase soluble subunit beta-1, GCS-beta-1, Guanylate

Target Details

	cyclase soluble subunit beta-3, GCS-beta-3, Soluble guanylate cyclase small subunit
Gene ID:	2983, 54195, 25202
UniProt:	Q02153 , O54865 , P20595
Pathways:	Transition Metal Ion Homeostasis

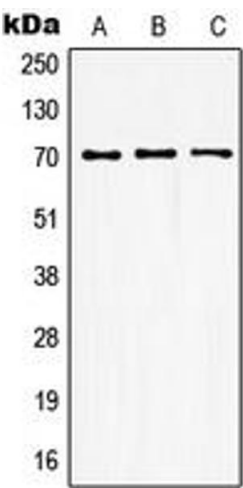
Application Details

Application Notes:	WB (1:500 - 1:1000), IH (1:100 - 1:200)
Restrictions:	For Research Use only

Handling

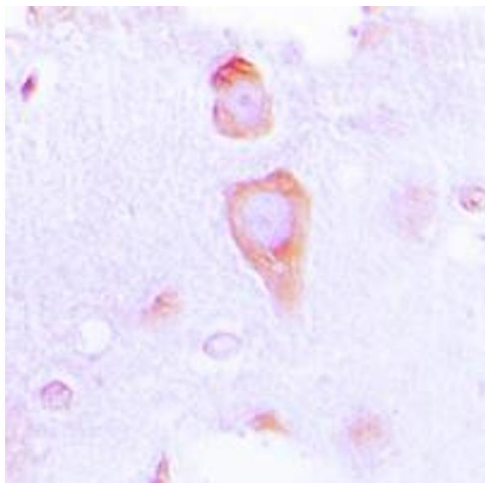
Format:	Liquid
Buffer:	Liquid in 0.42 % Potassium phosphate, 0.87 % Sodium chloride, pH 7.3, 30 % glycerol, and 0.01 % sodium azide.
Preservative:	Sodium azide
Precaution of Use:	This product contains Sodium azide: a POISONOUS AND HAZARDOUS SUBSTANCE which should be handled by trained staff only.
Storage:	-20 °C
Storage Comment:	Shipped at 4°C. Upon delivery aliquot and store at -20°C for one year. Avoid freeze/thaw cycles.
Expiry Date:	12 months

Images



Western Blotting

Image 1. Western blot analysis of GUCY1B3 expression in HEK293T (A), mouse kidney (B), rat kidney (C) whole cell lysates.



Immunohistochemistry

Image 2. Immunohistochemical analysis of GUCY1B3 staining in human brain formalin fixed paraffin embedded tissue section. The section was pre-treated using heat mediated antigen retrieval with sodium citrate buffer (pH 6.0). The section was then incubated with the antibody at room temperature and detected using an HRP conjugated compact polymer system. DAB was used as the chromogen. The section was then counterstained with haematoxylin and mounted with DPX.