



[Go to Product page](#)

Datasheet for ABIN7295862

anti-Histone H1 antibody (N-Term)

3 Images

Overview

Quantity:	100 µL
Target:	Histone H1
Binding Specificity:	N-Term
Reactivity:	Human, Mouse, Rat, Cow, Rabbit
Host:	Rabbit
Clonality:	Polyclonal
Conjugate:	This Histone H1 antibody is un-conjugated
Application:	Immunofluorescence (IF), Immunohistochemistry (IHC), Western Blotting (WB), Immunochromatography (IC)

Product Details

Immunogen:	KLH-conjugated synthetic peptide encompassing a sequence within the N-term region of human Histone H1.
Specificity:	Recognizes endogenous levels of Histone H1 protein.
Characteristics:	Rabbit polyclonal antibody to Histone H1
Purification:	The antibody was purified by immunogen affinity chromatography.

Target Details

Target:	Histone H1
Abstract:	Histone H1 Products

Target Details

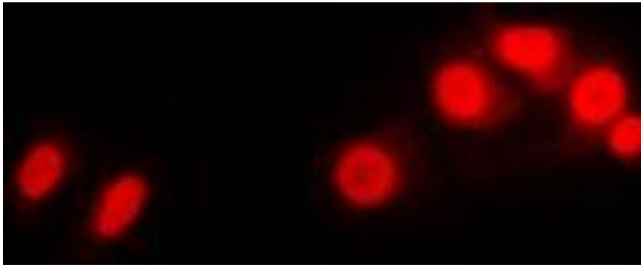
Background:	HIST1H1B, H1F5, Histone H1.5, Histone H1a, Histone H1b, Histone H1s-3, HIST1H1D, H1F3, Histone H1.3, Histone H1c, Histone H1s-2, HIST1H1E, H1F4, Histone H1.4, Histone H1b, Histone H1s-4
Gene ID:	3009, 3007, 3008
UniProt:	P16401 , P16402 , P10412 , P43276 , P43277 , P43274

Application Details

Application Notes:	WB (1:500 - 1:1000), IH (1:100 - 1:200), IF/IC (1:100 - 1:500)
Restrictions:	For Research Use only

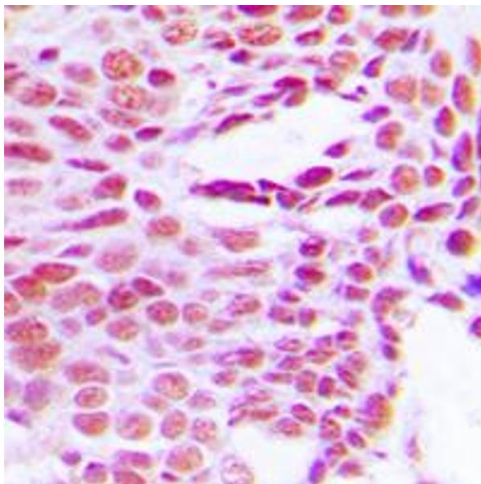
Handling

Format:	Liquid
Buffer:	Liquid in 0.42 % Potassium phosphate, 0.87 % Sodium chloride, pH 7.3, 30 % glycerol, and 0.01 % sodium azide.
Preservative:	Sodium azide
Precaution of Use:	This product contains Sodium azide: a POISONOUS AND HAZARDOUS SUBSTANCE which should be handled by trained staff only.
Storage:	-20 °C
Storage Comment:	Shipped at 4°C. Upon delivery aliquot and store at -20°C for one year. Avoid freeze/thaw cycles.
Expiry Date:	12 months



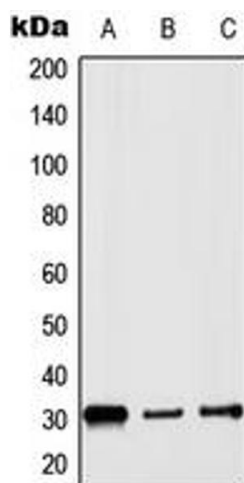
Immunofluorescence

Image 1. Immunofluorescent analysis of Histone H1 staining in Raw264.7 cells. Formalin-fixed cells were permeabilized with 0.1% Triton X-100 in TBS for 5-10 minutes and blocked with 3% BSA-PBS for 30 minutes at room temperature. Cells were probed with the primary antibody in 3% BSA-PBS and incubated overnight at 4 °C in a humidified chamber. Cells were washed with PBST and incubated with a DyLight 594-conjugated secondary antibody (red) in PBS at room temperature in the dark. DAPI was used to stain the cell nuclei (blue).



Immunohistochemistry

Image 2. Immunohistochemical analysis of Histone H1 staining in human breast cancer formalin fixed paraffin embedded tissue section. The section was pre-treated using heat mediated antigen retrieval with sodium citrate buffer (pH 6.0). The section was then incubated with the antibody at room temperature and detected using an HRP conjugated compact polymer system. DAB was used as the chromogen. The section was then counterstained with haematoxylin and mounted with DPX.



Western Blotting

Image 3. Western blot analysis of Histone H1 expression in HepG2 (A), Raw264.7 (B), PC12 (C) whole cell lysates.