



[Go to Product page](#)

Datasheet for ABIN7295916
anti-ERAS antibody (C-Term)

2 Images

Overview

Quantity:	100 µL
Target:	ERAS
Binding Specificity:	C-Term
Reactivity:	Human, Mouse, Rat
Host:	Rabbit
Clonality:	Polyclonal
Conjugate:	This ERAS antibody is un-conjugated
Application:	Western Blotting (WB), Immunofluorescence (IF), Immunochromatography (IC)

Product Details

Immunogen:	KLH-conjugated synthetic peptide encompassing a sequence within the C-term region of human ERAS.
Specificity:	Recognizes endogenous levels of ERAS protein.
Characteristics:	Rabbit polyclonal antibody to ERAS
Purification:	The antibody was purified by immunogen affinity chromatography.

Target Details

Target:	ERAS
Alternative Name:	ERAS (ERAS Products)
Background:	HRAS2, HRASP, GTPase ERas, E-Ras, Embryonic stem cell-expressed Ras

Target Details

Gene ID: 3266, 353283

UniProt: [Q7Z444](#), [Q7TN89](#)

Application Details

Application Notes: WB (1:500 - 1:1000), IF/IC (1:100 - 1:500)

Restrictions: For Research Use only

Handling

Format: Liquid

Buffer: Liquid in 0.42 % Potassium phosphate, 0.87 % Sodium chloride, pH 7.3, 30 % glycerol, and 0.01 % sodium azide.

Preservative: Sodium azide

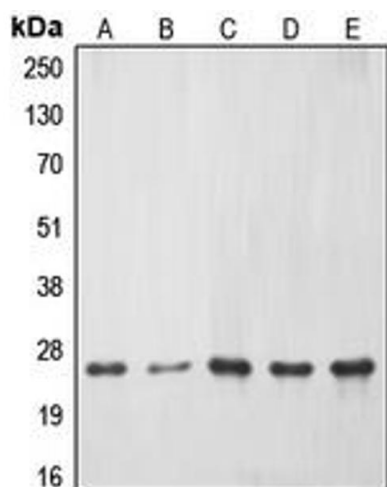
Precaution of Use: This product contains Sodium azide: a POISONOUS AND HAZARDOUS SUBSTANCE which should be handled by trained staff only.

Storage: -20 °C

Storage Comment: Shipped at 4°C. Upon delivery aliquot and store at -20°C for one year. Avoid freeze/thaw cycles.

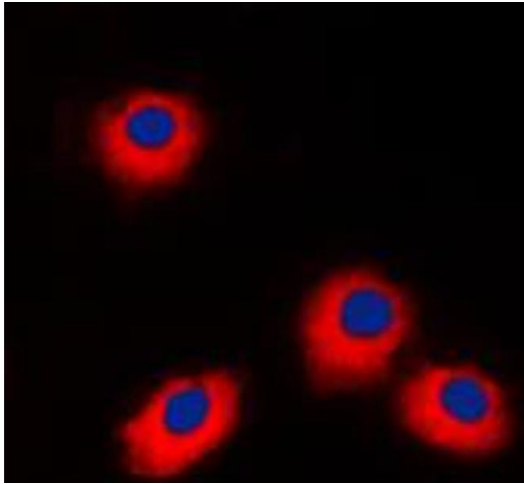
Expiry Date: 12 months

Images



Western Blotting

Image 1. Western blot analysis of ERAS expression in HeLa (A), Jurkat (B), mouse liver (C), PC12 (D), rat kidney (E) whole cell lysates.



Immunofluorescence

Image 2. Immunofluorescent analysis of ERAS staining in Jurkat cells. Formalin-fixed cells were permeabilized with 0.1% Triton X-100 in TBS for 5-10 minutes and blocked with 3% BSA-PBS for 30 minutes at room temperature. Cells were probed with the primary antibody in 3% BSA-PBS and incubated overnight at 4 °C in a humidified chamber. Cells were washed with PBST and incubated with a DyLight 594-conjugated secondary antibody (red) in PBS at room temperature in the dark. DAPI was used to stain the cell nuclei (blue).