

Datasheet for ABIN7295936
anti-HSPE1 antibody (Center)



[Go to Product page](#)

3 Images

Overview

Quantity:	100 µL
Target:	HSPE1
Binding Specificity:	Center
Reactivity:	Human, Mouse, Rat, Cow, Sheep, Dog, Pig
Host:	Rabbit
Clonality:	Polyclonal
Conjugate:	This HSPE1 antibody is un-conjugated
Application:	Western Blotting (WB), Immunohistochemistry (IHC), Immunofluorescence (IF), Immunochromatography (IC)

Product Details

Immunogen:	KLH-conjugated synthetic peptide encompassing a sequence within the center region of human HSPE1.
Specificity:	Recognizes endogenous levels of HSPE1 protein.
Characteristics:	Rabbit polyclonal antibody to HSPE1
Purification:	The antibody was purified by immunogen affinity chromatography.

Target Details

Target:	HSPE1
Alternative Name:	HSPE1 (HSPE1 Products)

Target Details

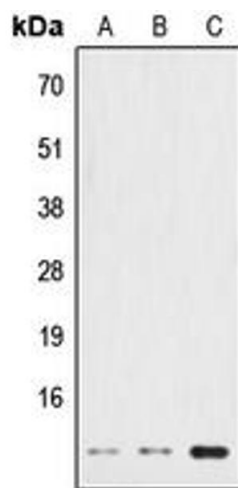
Background:	10 kDa heat shock protein, mitochondrial, Hsp10, 10 kDa chaperonin, Chaperonin 10, CPN10, Early-pregnancy factor, EPF
Gene ID:	3336, 15528
UniProt:	P61604 , Q64433 , P26772
Pathways:	Positive Regulation of Endopeptidase Activity

Application Details

Application Notes:	WB (1:500 - 1:1000), IH (1:100 - 1:200), IF/IC (1:100 - 1:500)
Restrictions:	For Research Use only

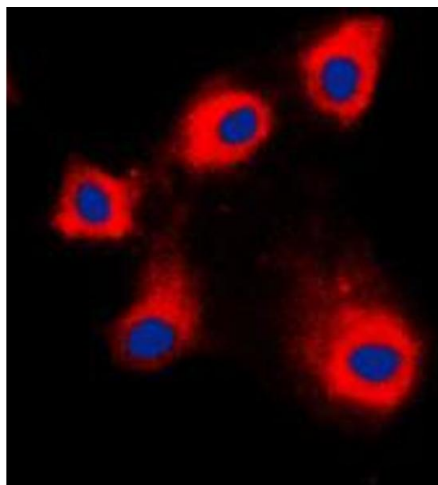
Handling

Format:	Liquid
Buffer:	Liquid in 0.42 % Potassium phosphate, 0.87 % Sodium chloride, pH 7.3, 30 % glycerol, and 0.01 % sodium azide.
Preservative:	Sodium azide
Precaution of Use:	This product contains Sodium azide: a POISONOUS AND HAZARDOUS SUBSTANCE which should be handled by trained staff only.
Storage:	-20 °C
Storage Comment:	Shipped at 4°C. Upon delivery aliquot and store at -20°C for one year. Avoid freeze/thaw cycles.
Expiry Date:	12 months



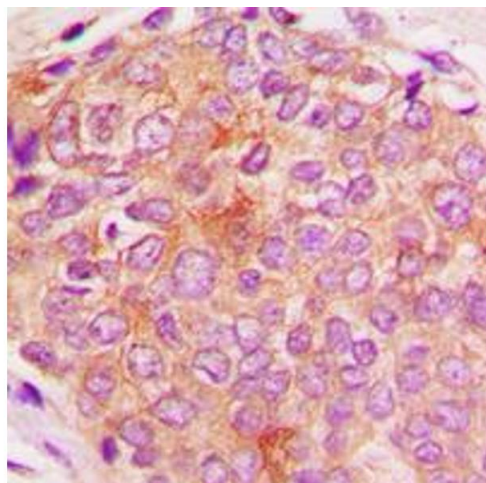
Western Blotting

Image 1. Western blot analysis of HSPE1 expression in HeLa (A), NIH3T3 (B), PC12 (C) whole cell lysates.



Immunofluorescence

Image 2. Immunofluorescent analysis of HSPE1 staining in NIH3T3 cells. Formalin-fixed cells were permeabilized with 0.1% Triton X-100 in TBS for 5-10 minutes and blocked with 3% BSA-PBS for 30 minutes at room temperature. Cells were probed with the primary antibody in 3% BSA-PBS and incubated overnight at 4 °C in a humidified chamber. Cells were washed with PBST and incubated with a DyLight 594-conjugated secondary antibody (red) in PBS at room temperature in the dark. DAPI was used to stain the cell nuclei (blue).



Immunohistochemistry

Image 3. Immunohistochemical analysis of HSPE1 staining in human breast cancer formalin fixed paraffin embedded tissue section. The section was pre-treated using heat mediated antigen retrieval with sodium citrate buffer (pH 6.0). The section was then incubated with the antibody at room temperature and detected using an HRP conjugated compact polymer system. DAB was used as the chromogen. The section was then counterstained with haematoxylin and mounted with DPX.