

Datasheet for ABIN7295938  
**anti-DNAJB1 antibody (C-Term)**



[Go to Product page](#)

**3** Images

## Overview

Quantity:	100 µL
Target:	DNAJB1
Binding Specificity:	C-Term
Reactivity:	Human, Mouse, Rat, Dog, Monkey, Cow, Pig
Host:	Rabbit
Clonality:	Polyclonal
Conjugate:	This DNAJB1 antibody is un-conjugated
Application:	Western Blotting (WB), Immunohistochemistry (IHC), Immunofluorescence (IF), Immunochromatography (IC)

## Product Details

Immunogen:	KLH-conjugated synthetic peptide encompassing a sequence within the C-term region of human HSP40.
Specificity:	Recognizes endogenous levels of HSP40 protein.
Characteristics:	Rabbit polyclonal antibody to HSP40
Purification:	The antibody was purified by immunogen affinity chromatography.

## Target Details

Target:	DNAJB1
Alternative Name:	HSP40 ( <a href="#">DNAJB1 Products</a> )

## Target Details

Background:	DNAJ1, HDJ1, HSPF1, DnaJ homolog subfamily B member 1, DnaJ protein homolog 1, Heat shock 40 kDa protein 1, HSP40, Heat shock protein 40, Human DnaJ protein 1, hDj-1
Gene ID:	3337, 81489
UniProt:	<a href="#">P25685</a> , <a href="#">Q9QYJ3</a>

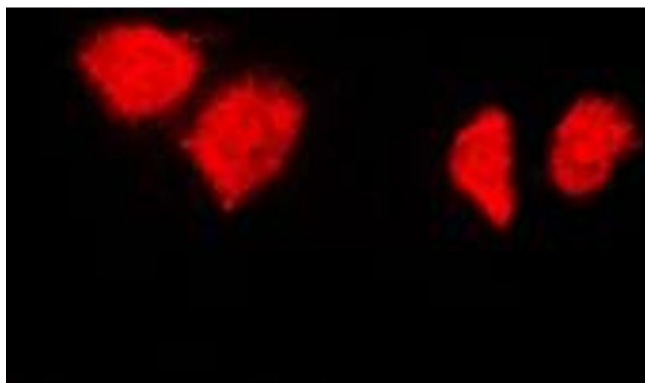
## Application Details

Application Notes:	WB (1:500 - 1:1000), IH (1:100 - 1:200), IF/IC (1:100 - 1:500)
Restrictions:	For Research Use only

## Handling

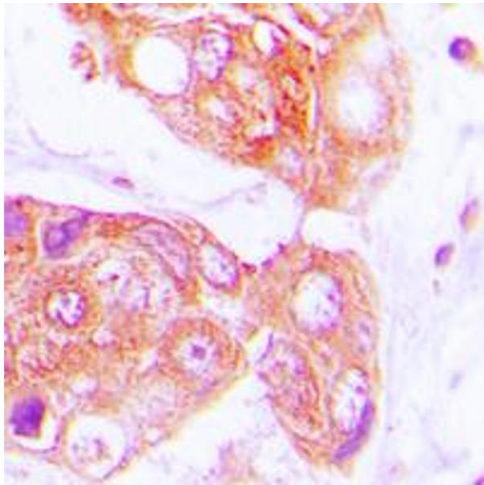
Format:	Liquid
Buffer:	Liquid in 0.42 % Potassium phosphate, 0.87 % Sodium chloride, pH 7.3, 30 % glycerol, and 0.01 % sodium azide.
Preservative:	Sodium azide
Precaution of Use:	This product contains Sodium azide: a POISONOUS AND HAZARDOUS SUBSTANCE which should be handled by trained staff only.
Storage:	-20 °C
Storage Comment:	Shipped at 4°C. Upon delivery aliquot and store at -20°C for one year. Avoid freeze/thaw cycles.
Expiry Date:	12 months

## Images



### Immunofluorescence

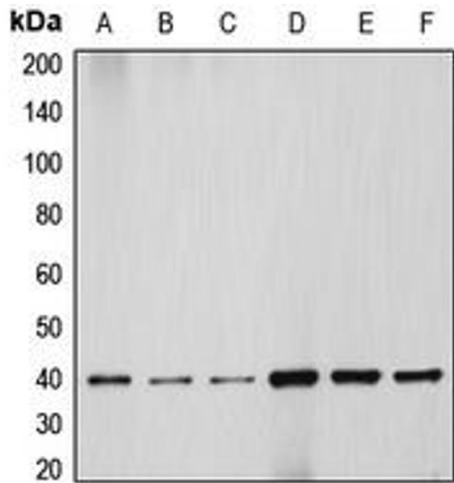
**Image 1.** Immunofluorescent analysis of HSP40 staining in HeLa cells. Formalin-fixed cells were permeabilized with 0.1% Triton X-100 in TBS for 5-10 minutes and blocked with 3% BSA-PBS for 30 minutes at room temperature. Cells were probed with the primary antibody in 3% BSA-PBS and incubated overnight at 4 °C in a humidified chamber. Cells were washed with PBST and incubated with a DyLight 594-conjugated secondary antibody (red) in PBS at room



temperature in the dark. DAPI was used to stain the cell nuclei (blue).

**Immunohistochemistry**

**Image 2.** Immunohistochemical analysis of HSP40 staining in human lung cancer formalin fixed paraffin embedded tissue section. The section was pre-treated using heat mediated antigen retrieval with sodium citrate buffer (pH 6.0). The section was then incubated with the antibody at room temperature and detected using an HRP conjugated compact polymer system. DAB was used as the chromogen. The section was then counterstained with haematoxylin and mounted with DPX.



**Western Blotting**

**Image 3.** Western blot analysis of HSP40 expression in HEK293T (A), HeLa (B), NIH3T3 (C), PC12 (D), Jurkat (E), HepG2 (F) whole cell lysates.