



[Go to Product page](#)

Datasheet for ABIN7295962
anti-Factor I antibody (Center)

1 Image

Overview

Quantity:	100 µL
Target:	Factor I
Binding Specificity:	Center
Reactivity:	Human, Mouse, Rat
Host:	Rabbit
Clonality:	Polyclonal
Conjugate:	This Factor I antibody is un-conjugated
Application:	Western Blotting (WB)

Product Details

Immunogen:	KLH-conjugated synthetic peptide encompassing a sequence within the center region of human Factor I.
Specificity:	Recognizes endogenous levels of Factor I protein.
Characteristics:	Rabbit polyclonal antibody to Factor I
Purification:	The antibody was purified by immunogen affinity chromatography.

Target Details

Target:	Factor I
Abstract:	Factor I Products
Background:	IF, Complement factor I, C3B/C4B inactivator

Target Details

Gene ID: 3426, 12630, 79126

UniProt: [P05156](#), [Q61129](#), [Q9WUW3](#)

Application Details

Application Notes: WB (1:500 - 1:1000)

Restrictions: For Research Use only

Handling

Format: Liquid

Buffer: Liquid in 0.42 % Potassium phosphate, 0.87 % Sodium chloride, pH 7.3, 30 % glycerol, and 0.01 % sodium azide.

Preservative: Sodium azide

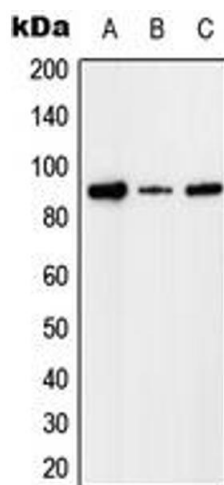
Precaution of Use: This product contains Sodium azide: a POISONOUS AND HAZARDOUS SUBSTANCE which should be handled by trained staff only.

Storage: -20 °C

Storage Comment: Shipped at 4°C. Upon delivery aliquot and store at -20°C for one year. Avoid freeze/thaw cycles.

Expiry Date: 12 months

Images



Western Blotting

Image 1. Western blot analysis of Factor I expression in HEK293T (A), Raw264.7 (B), PC12 (C) whole cell lysates.