

Datasheet for ABIN7296084
anti-C-JUN antibody (Center)



[Go to Product page](#)

4 Images

Overview

Quantity:	100 µL
Target:	C-JUN (JUN)
Binding Specificity:	Center
Reactivity:	Human, Mouse, Rat, Cow, Pig, Chicken
Host:	Rabbit
Clonality:	Polyclonal
Conjugate:	This C-JUN antibody is un-conjugated
Application:	Western Blotting (WB), Immunohistochemistry (IHC), Immunoprecipitation (IP), Flow Cytometry (FACS), Chromatin Immunoprecipitation (ChIP)

Product Details

Immunogen:	KLH-conjugated synthetic peptide encompassing a sequence within the center region of human c-Jun.
Specificity:	Recognizes endogenous levels of c-Jun protein.
Characteristics:	Rabbit polyclonal antibody to c-Jun
Purification:	The antibody was purified by immunogen affinity chromatography.

Target Details

Target:	C-JUN (JUN)
Alternative Name:	C-Jun (JUN Products)

Target Details

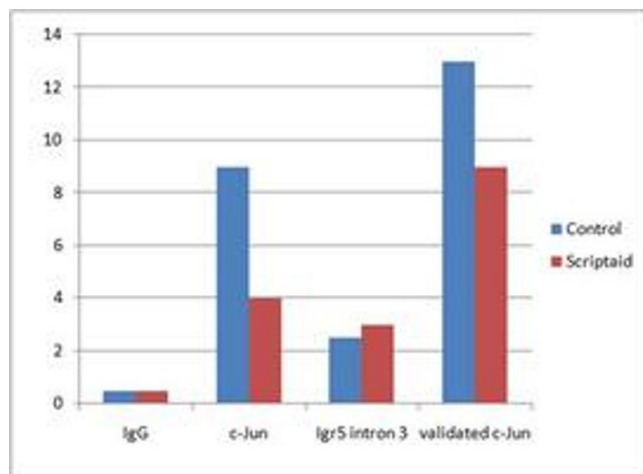
Background:	Transcription factor AP-1, Activator protein 1, AP1, Proto-oncogene c-Jun, V-jun avian sarcoma virus 17 oncogene homolog, p39
Gene ID:	3725, 16476, 24516
UniProt:	P05412 , P05627 , P17325
Pathways:	MAPK Signaling , RTK Signaling , WNT Signaling , Fc-epsilon Receptor Signaling Pathway , Activation of Innate immune Response , Myometrial Relaxation and Contraction , Skeletal Muscle Fiber Development , Protein targeting to Nucleus , Toll-Like Receptors Cascades , Autophagy , Signaling of Hepatocyte Growth Factor Receptor , BCR Signaling , S100 Proteins

Application Details

Application Notes:	WB (1:500 - 1:1000), IH (1:100 - 1:200), IP (1:10 - 1:100), FC (1:100 - 1:300), ChIP (Use at an assay dependent concentration)
Restrictions:	For Research Use only

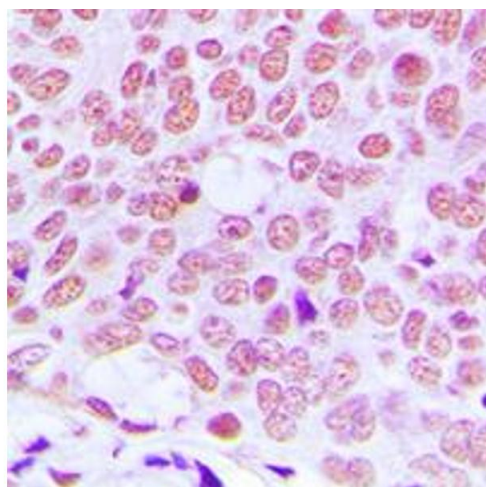
Handling

Format:	Liquid
Buffer:	Liquid in 0.42 % Potassium phosphate, 0.87 % Sodium chloride, pH 7.3, 30 % glycerol, and 0.01 % sodium azide.
Preservative:	Sodium azide
Precaution of Use:	This product contains Sodium azide: a POISONOUS AND HAZARDOUS SUBSTANCE which should be handled by trained staff only.
Storage:	-20 °C
Storage Comment:	Shipped at 4°C. Upon delivery aliquot and store at -20°C for one year. Avoid freeze/thaw cycles.
Expiry Date:	12 months



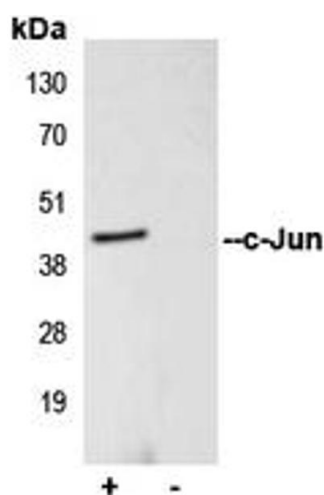
Chromatin Immunoprecipitation

Image 1. ChIP analysis of Human endothelial cells (EA.hy926), incubated for 10 hours at 4°C. Cross-linking (X-ChIP) using formaldehyde for 10 minutes. Positive control: Position 89340150-89340297 in chromosome 11 (has a validated c-Jun site). Negative Control: Igr5 intron 3 (contains no c-Jun binding site). Detection step: Real-time PCR.



Immunohistochemistry

Image 2. Immunohistochemical analysis of c-Jun staining in human breast cancer formalin fixed paraffin embedded tissue section. The section was pre-treated using heat mediated antigen retrieval with sodium citrate buffer (pH 6.0). The section was then incubated with the antibody at room temperature and detected using an HRP conjugated compact polymer system. DAB was used as the chromogen. The section was then counterstained with haematoxylin and mounted with DPX.



Immunoprecipitation

Image 3. Immunoprecipitation of c-Jun from 0.5mg HEK293T whole cell extract lysate, using 5ug of Anti-c-Jun Antibody and 50ul of protein G magnetic beads (+). No antibody was added to the control (-). The antibody was incubated under agitation with Protein G beads for 10min, HEK293T whole cell extract lysate diluted in RIPA buffer was added to each sample and incubated for a further 10min under agitation. Proteins were eluted by addition of 40ul SDS loading buffer and incubated for 10min at 70°C; 10ul of each sample was separated on a SDS PAGE gel, transferred to a nitrocellulose membrane, blocked with 5% BSA and probed with Anti-c-Jun Antibody.

Please check the [product details page](#) for more images. Overall 4 images are available for ABIN7296084.