

Datasheet for ABIN7296096
anti-KCNA1 antibody (Center)



[Go to Product page](#)

1 Image

Overview

Quantity:	100 µL
Target:	KCNA1
Binding Specificity:	Center
Reactivity:	Human, Mouse, Rat, Dog, Pig
Host:	Rabbit
Clonality:	Polyclonal
Conjugate:	This KCNA1 antibody is un-conjugated
Application:	Western Blotting (WB), Immunoprecipitation (IP)

Product Details

Immunogen:	KLH-conjugated synthetic peptide encompassing a sequence within the center region of human Kv1.1.
Specificity:	Recognizes endogenous levels of Kv1.1 protein.
Characteristics:	Rabbit polyclonal antibody to Kv1.1
Purification:	The antibody was purified by immunogen affinity chromatography.

Target Details

Target:	KCNA1
Alternative Name:	Kv1.1 (KCNA1 Products)
Background:	Potassium voltage-gated channel subfamily A member 1, Voltage-gated K(+) channel HuK1,

Target Details

	Voltage-gated potassium channel HBK1, Voltage-gated potassium channel subunit Kv1.1
Gene ID:	3736, 16485, 24520
UniProt:	Q09470 , P16388 , P10499

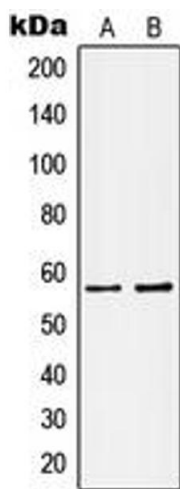
Application Details

Application Notes:	WB (1:500 - 1:1000), IP (1:10 - 1:100)
Restrictions:	For Research Use only

Handling

Format:	Liquid
Buffer:	Liquid in 0.42 % Potassium phosphate, 0.87 % Sodium chloride, pH 7.3, 30 % glycerol, and 0.01 % sodium azide.
Preservative:	Sodium azide
Precaution of Use:	This product contains Sodium azide: a POISONOUS AND HAZARDOUS SUBSTANCE which should be handled by trained staff only.
Storage:	-20 °C
Storage Comment:	Shipped at 4°C. Upon delivery aliquot and store at -20°C for one year. Avoid freeze/thaw cycles.
Expiry Date:	12 months

Images



Western Blotting

Image 1. Western blot analysis of Kv1.1 expression in HEK293 (A), MCF7 (B) whole cell lysates.