

Datasheet for ABIN7296106
anti-KCNC2 antibody (C-Term)



[Go to Product page](#)

1 Image

Overview

Quantity:	100 µL
Target:	KCNC2
Binding Specificity:	C-Term
Reactivity:	Human, Mouse, Rat, Dog, Pig
Host:	Rabbit
Clonality:	Polyclonal
Conjugate:	This KCNC2 antibody is un-conjugated
Application:	Western Blotting (WB)

Product Details

Immunogen:	KLH-conjugated synthetic peptide encompassing a sequence within the C-term region of human Kv3.2.
Specificity:	Recognizes endogenous levels of Kv3.2 protein.
Characteristics:	Rabbit polyclonal antibody to Kv3.2
Purification:	The antibody was purified by immunogen affinity chromatography.

Target Details

Target:	KCNC2
Alternative Name:	Kv3.2 (KCNC2 Products)
Background:	Potassium voltage-gated channel subfamily C member 2, Voltage-gated potassium channel

Target Details

	Kv3.2
Gene ID:	3747, 268345, 246153
UniProt:	Q96PR1 , Q14B80 , P22462

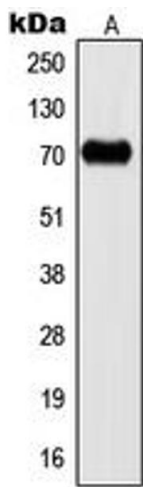
Application Details

Application Notes:	WB (1:500 - 1:1000)
Restrictions:	For Research Use only

Handling

Format:	Liquid
Buffer:	Liquid in 0.42 % Potassium phosphate, 0.87 % Sodium chloride, pH 7.3, 30 % glycerol, and 0.01 % sodium azide.
Preservative:	Sodium azide
Precaution of Use:	This product contains Sodium azide: a POISONOUS AND HAZARDOUS SUBSTANCE which should be handled by trained staff only.
Storage:	-20 °C
Storage Comment:	Shipped at 4°C. Upon delivery aliquot and store at -20°C for one year. Avoid freeze/thaw cycles.
Expiry Date:	12 months

Images



Western Blotting

Image 1. Western blot analysis of Kv3.2 expression in U251MG (A) whole cell lysates.