

Datasheet for ABIN7296110
anti-KCNH1 antibody (Center)



[Go to Product page](#)

1 Image

Overview

Quantity:	100 µL
Target:	KCNH1
Binding Specificity:	Center
Reactivity:	Human, Mouse, Rat, Cow, Zebrafish (Danio rerio)
Host:	Rabbit
Clonality:	Polyclonal
Conjugate:	This KCNH1 antibody is un-conjugated
Application:	Western Blotting (WB)

Product Details

Immunogen:	KLH-conjugated synthetic peptide encompassing a sequence within the center region of human Kv10.1.
Specificity:	Recognizes endogenous levels of Kv10.1 protein.
Characteristics:	Rabbit polyclonal antibody to Kv10.1
Purification:	The antibody was purified by immunogen affinity chromatography.

Target Details

Target:	KCNH1
Alternative Name:	Kv10.1 (KCNH1 Products)
Background:	EAG, EAG1, Potassium voltage-gated channel subfamily H member 1, Ether-a-go-go potassium

Target Details

	channel 1, EAG channel 1, h-eag, hEAG1, Voltage-gated potassium channel subunit Kv10.1
Gene ID:	3756, 16510, 65198
UniProt:	O95259 , Q60603 , Q63472

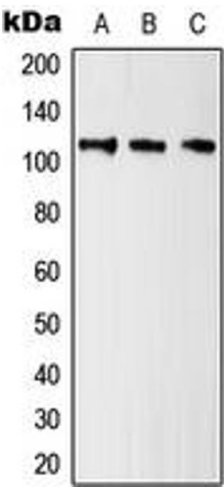
Application Details

Application Notes:	WB (1:500 - 1:1000)
Restrictions:	For Research Use only

Handling

Format:	Liquid
Buffer:	Liquid in 0.42 % Potassium phosphate, 0.87 % Sodium chloride, pH 7.3, 30 % glycerol, and 0.01 % sodium azide.
Preservative:	Sodium azide
Precaution of Use:	This product contains Sodium azide: a POISONOUS AND HAZARDOUS SUBSTANCE which should be handled by trained staff only.
Storage:	-20 °C
Storage Comment:	Shipped at 4°C. Upon delivery aliquot and store at -20°C for one year. Avoid freeze/thaw cycles.
Expiry Date:	12 months

Images



Western Blotting

Image 1. Western blot analysis of Kv10.1 expression in HeLa (A), NIH3T3 (B), H9C2 (C) whole cell lysates.