

Datasheet for ABIN7296180
anti-LHX1 antibody (Center)[Go to Product page](#)

2 Images

Overview

| | |
|----------------------|---|
| Quantity: | 100 µL |
| Target: | LHX1 |
| Binding Specificity: | Center |
| Reactivity: | Human, Mouse, Rat |
| Host: | Rabbit |
| Clonality: | Polyclonal |
| Conjugate: | This LHX1 antibody is un-conjugated |
| Application: | Western Blotting (WB), Immunofluorescence (IF), Immunochromatography (IC) |

Product Details

| | |
|------------------|--|
| Immunogen: | KLH-conjugated synthetic peptide encompassing a sequence within the center region of human LHX1. |
| Specificity: | Recognizes endogenous levels of LHX1 protein. |
| Characteristics: | Rabbit polyclonal antibody to LHX1 |
| Purification: | The antibody was purified by immunogen affinity chromatography. |

Target Details

| | |
|-------------------|---|
| Target: | LHX1 |
| Alternative Name: | LHX1 (LHX1 Products) |
| Background: | LIM-1, LIM1, LIM/homeobox protein Lhx1, LIM homeobox protein 1, Homeobox protein Lim-1, |

Target Details

| | |
|----------|--|
| | hLim-1 |
| Gene ID: | 3975, 16869, 257634 |
| UniProt: | P48742 , P63006 , P63007 |

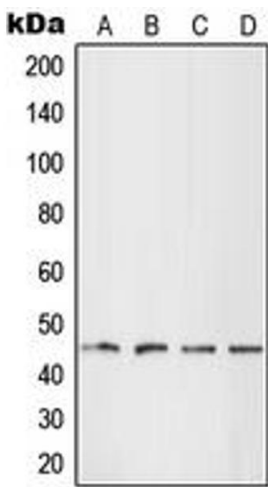
Application Details

| | |
|--------------------|--|
| Application Notes: | WB (1:500 - 1:1000), IF/IC (1:100 - 1:500) |
| Restrictions: | For Research Use only |

Handling

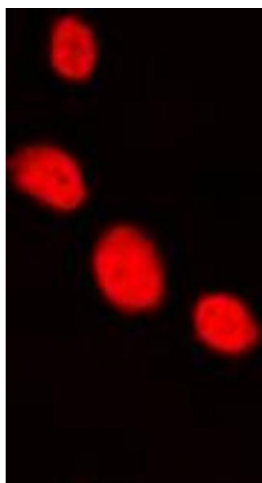
| | |
|--------------------|--|
| Format: | Liquid |
| Buffer: | Liquid in 0.42 % Potassium phosphate, 0.87 % Sodium chloride, pH 7.3, 30 % glycerol, and 0.01 % sodium azide. |
| Preservative: | Sodium azide |
| Precaution of Use: | This product contains Sodium azide: a POISONOUS AND HAZARDOUS SUBSTANCE which should be handled by trained staff only. |
| Storage: | -20 °C |
| Storage Comment: | Shipped at 4°C. Upon delivery aliquot and store at -20°C for one year. Avoid freeze/thaw cycles. |
| Expiry Date: | 12 months |

Images



Western Blotting

Image 1. Western blot analysis of LHX1 expression in HEK293T (A), HepG2 (B), SP2/0 (C), H9C2 (D) whole cell lysates.



Immunofluorescence

Image 2. Immunofluorescent analysis of LHX1 staining in HepG2 cells. Formalin-fixed cells were permeabilized with 0.1% Triton X-100 in TBS for 5-10 minutes and blocked with 3% BSA-PBS for 30 minutes at room temperature. Cells were probed with the primary antibody in 3% BSA-PBS and incubated overnight at 4 °C in a humidified chamber. Cells were washed with PBST and incubated with a DyLight 594-conjugated secondary antibody (red) in PBS at room temperature in the dark. DAPI was used to stain the cell nuclei (blue).