

Datasheet for ABIN7296182  
**anti-LIG4 antibody (Center)**

## 3 Images

[Go to Product page](#)

## Overview

Quantity:	100 µL
Target:	LIG4
Binding Specificity:	Center
Reactivity:	Human, Cow, Dog
Host:	Rabbit
Clonality:	Polyclonal
Conjugate:	This LIG4 antibody is un-conjugated
Application:	Western Blotting (WB), Immunohistochemistry (IHC), Immunofluorescence (IF), Immunochromatography (IC)

## Product Details

Immunogen:	KLH-conjugated synthetic peptide encompassing a sequence within the center region of human DNA Ligase 4.
Specificity:	Recognizes endogenous levels of DNA Ligase 4 protein.
Characteristics:	Rabbit polyclonal antibody to DNA Ligase 4
Purification:	The antibody was purified by immunogen affinity chromatography.

## Target Details

Target:	LIG4
Alternative Name:	DNA Ligase 4 ( <a href="#">LIG4 Products</a> )

## Target Details

Background:	DNA ligase 4, DNA ligase IV, Polydeoxyribonucleotide synthase [ATP] 4
Gene ID:	3981
UniProt:	<a href="#">P49917</a>
Pathways:	<a href="#">DNA Damage Repair</a> , <a href="#">Production of Molecular Mediator of Immune Response</a>

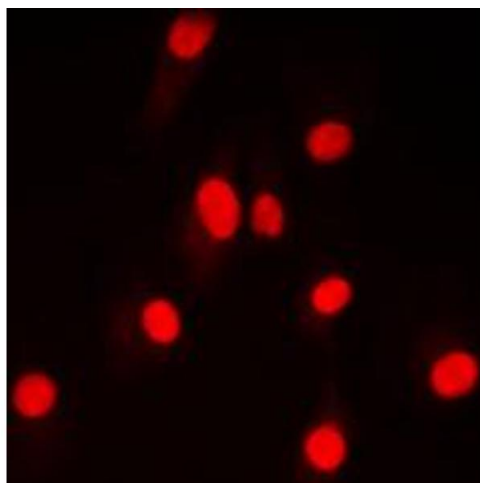
## Application Details

Application Notes:	WB (1:500 - 1:1000), IH (1:100 - 1:200), IF/IC (1:100 - 1:500)
Restrictions:	For Research Use only

## Handling

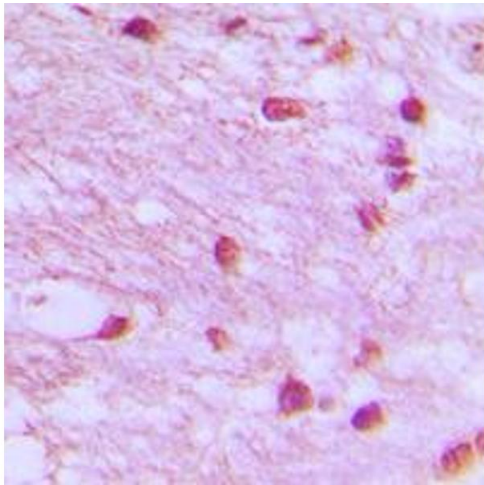
Format:	Liquid
Buffer:	Liquid in 0.42 % Potassium phosphate, 0.87 % Sodium chloride, pH 7.3, 30 % glycerol, and 0.01 % sodium azide.
Preservative:	Sodium azide
Precaution of Use:	This product contains Sodium azide: a POISONOUS AND HAZARDOUS SUBSTANCE which should be handled by trained staff only.
Storage:	-20 °C
Storage Comment:	Shipped at 4°C. Upon delivery aliquot and store at -20°C for one year. Avoid freeze/thaw cycles.
Expiry Date:	12 months

## Images



### Immunofluorescence

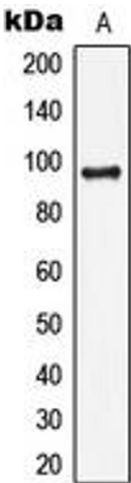
**Image 1.** Immunofluorescent analysis of DNA Ligase 4 staining in HepG2 cells. Formalin-fixed cells were permeabilized with 0.1% Triton X-100 in TBS for 5-10 minutes and blocked with 3% BSA-PBS for 30 minutes at room temperature. Cells were probed with the primary antibody in 3% BSA-PBS and incubated overnight at 4 °C in a humidified chamber. Cells were washed with PBST and incubated with a DyLight 594-conjugated secondary



antibody (red) in PBS at room temperature in the dark. DAPI was used to stain the cell nuclei (blue).

Immunohistochemistry

**Image 2.** Immunohistochemical analysis of DNA Ligase 4 staining in human brain formalin fixed paraffin embedded tissue section. The section was pre-treated using heat mediated antigen retrieval with sodium citrate buffer (pH 6.0). The section was then incubated with the antibody at room temperature and detected using an HRP conjugated compact polymer system. DAB was used as the chromogen. The section was then counterstained with haematoxylin and mounted with DPX.



Western Blotting

**Image 3.** Western blot analysis of DNA Ligase 4 expression in HepG2 (A) whole cell lysates.