



[Go to Product page](#)

Datasheet for ABIN7296206
anti-VWA5A antibody (Center)

2 Images

Overview

Quantity:	100 µL
Target:	VWA5A
Binding Specificity:	Center
Reactivity:	Human, Mouse, Rat, Monkey
Host:	Rabbit
Clonality:	Polyclonal
Conjugate:	This VWA5A antibody is un-conjugated
Application:	Western Blotting (WB), Immunofluorescence (IF), Immunochromatography (IC)

Product Details

Immunogen:	KLH-conjugated synthetic peptide encompassing a sequence within the center region of human VWA5A.
Specificity:	Recognizes endogenous levels of VWA5A protein.
Characteristics:	Rabbit polyclonal antibody to VWA5A
Purification:	The antibody was purified by immunogen affinity chromatography.

Target Details

Target:	VWA5A
Alternative Name:	VWA5A (VWA5A Products)
Background:	BCSC1, LOH11CR2A, von Willebrand factor A domain-containing protein 5A, Breast cancer

Target Details

suppressor candidate 1, BCSC-1, Loss of heterozygosity 11 chromosomal region 2 gene A protein

Gene ID: 4013, 67776

UniProt: [O00534](#), [Q99KC8](#)

Application Details

Application Notes: WB (1:500 - 1:1000), IF/IC (1:100 - 1:500)

Restrictions: For Research Use only

Handling

Format: Liquid

Buffer: Liquid in 0.42 % Potassium phosphate, 0.87 % Sodium chloride, pH 7.3, 30 % glycerol, and 0.01 % sodium azide.

Preservative: Sodium azide

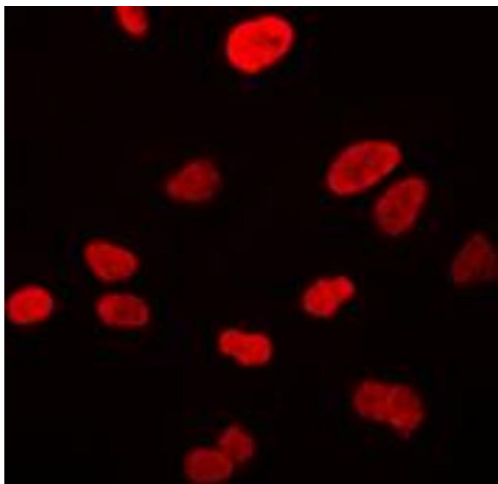
Precaution of Use: This product contains Sodium azide: a POISONOUS AND HAZARDOUS SUBSTANCE which should be handled by trained staff only.

Storage: -20 °C

Storage Comment: Shipped at 4°C. Upon delivery aliquot and store at -20°C for one year. Avoid freeze/thaw cycles.

Expiry Date: 12 months

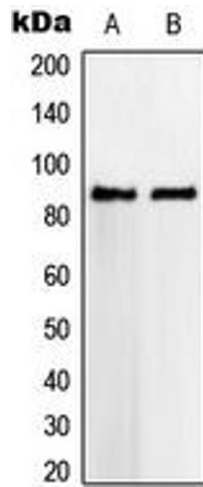
Images



Immunofluorescence

Image 1. Immunofluorescent analysis of VWA5A staining in HeLa cells. Formalin-fixed cells were permeabilized with 0.1% Triton X-100 in TBS for 5-10 minutes and blocked with 3% BSA-PBS for 30 minutes at room temperature. Cells were probed with the primary antibody in 3% BSA-PBS and incubated overnight at 4 °C in a humidified chamber. Cells were washed with PBST and incubated with a DyLight 594-conjugated secondary antibody (red) in PBS at room

temperature in the dark. DAPI was used to stain the cell nuclei (blue).



Western Blotting

Image 2. Western blot analysis of VWA5A expression in HeLa (A), SVT2 (B) whole cell lysates.