



[Go to Product page](#)

Datasheet for ABIN7296246
anti-MAGEA6 antibody (Center)

1 Image

Overview

Quantity:	100 µL
Target:	MAGEA6
Binding Specificity:	Center
Reactivity:	Human, Mouse, Rat
Host:	Rabbit
Clonality:	Polyclonal
Conjugate:	This MAGEA6 antibody is un-conjugated
Application:	Western Blotting (WB)

Product Details

Immunogen:	KLH-conjugated synthetic peptide encompassing a sequence within the center region of human MAGEA6.
Specificity:	Recognizes endogenous levels of MAGEA6 protein.
Characteristics:	Rabbit polyclonal antibody to MAGEA6
Purification:	The antibody was purified by immunogen affinity chromatography.

Target Details

Target:	MAGEA6
Alternative Name:	MAGEA6 (MAGEA6 Products)
Background:	MAGE6, Melanoma-associated antigen 6, Cancer/testis antigen 1.6, CT1.6, MAGE-6 antigen,

Target Details

MAGE3B antigen

Gene ID: 4105

UniProt: [P43360](#)

Application Details

Application Notes: WB (1:500 - 1:1000)

Restrictions: For Research Use only

Handling

Format: Liquid

Buffer: Liquid in 0.42 % Potassium phosphate, 0.87 % Sodium chloride, pH 7.3, 30 % glycerol, and 0.01 % sodium azide.

Preservative: Sodium azide

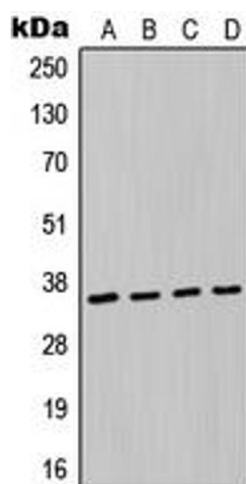
Precaution of Use: This product contains Sodium azide: a POISONOUS AND HAZARDOUS SUBSTANCE which should be handled by trained staff only.

Storage: -20 °C

Storage Comment: Shipped at 4°C. Upon delivery aliquot and store at -20°C for one year. Avoid freeze/thaw cycles.

Expiry Date: 12 months

Images



Western Blotting

Image 1. Western blot analysis of MAGEA6 expression in A549 (A), MCF7 (B), NIH3T3 (C), H9C2 (D) whole cell lysates.