

Datasheet for ABIN7296286
anti-Menin antibody (Center)



[Go to Product page](#)

2 Images

Overview

| | |
|----------------------|---|
| Quantity: | 100 µL |
| Target: | Menin (MEN1) |
| Binding Specificity: | Center |
| Reactivity: | Human, Mouse, Rat, Cow, Chicken, Monkey |
| Host: | Rabbit |
| Clonality: | Polyclonal |
| Conjugate: | This Menin antibody is un-conjugated |
| Application: | Western Blotting (WB), Immunohistochemistry (IHC) |

Product Details

| | |
|------------------|---|
| Immunogen: | KLH-conjugated synthetic peptide encompassing a sequence within the center region of human Menin. |
| Specificity: | Recognizes endogenous levels of Menin protein. |
| Characteristics: | Rabbit polyclonal antibody to Menin |
| Purification: | The antibody was purified by immunogen affinity chromatography. |

Target Details

| | |
|-------------------|---|
| Target: | Menin (MEN1) |
| Alternative Name: | Menin (MEN1 Products) |
| Background: | SCG2, Menin |

Target Details

| | |
|-----------|---|
| Gene ID: | 4221, 17283, 29417 |
| UniProt: | O00255 , O88559 , Q9WVR8 |
| Pathways: | Chromatin Binding , Positive Regulation of Endopeptidase Activity |

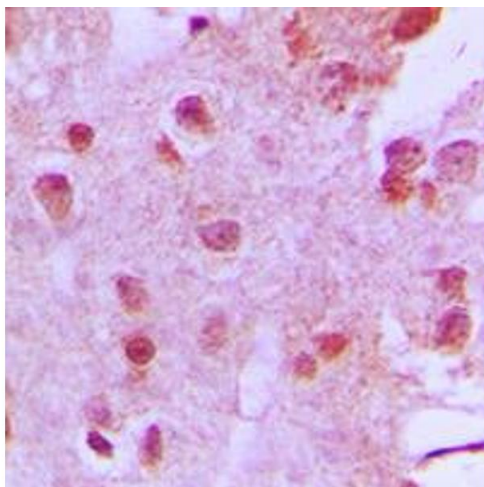
Application Details

| | |
|--------------------|---|
| Application Notes: | WB (1:500 - 1:1000), IH (1:100 - 1:200) |
| Restrictions: | For Research Use only |

Handling

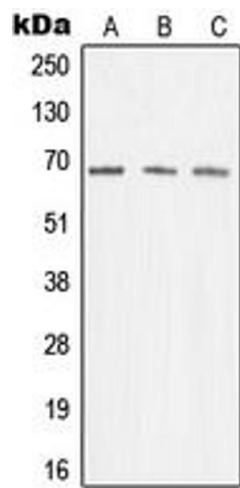
| | |
|--------------------|--|
| Format: | Liquid |
| Buffer: | Liquid in 0.42 % Potassium phosphate, 0.87 % Sodium chloride, pH 7.3, 30 % glycerol, and 0.01 % sodium azide. |
| Preservative: | Sodium azide |
| Precaution of Use: | This product contains Sodium azide: a POISONOUS AND HAZARDOUS SUBSTANCE which should be handled by trained staff only. |
| Storage: | -20 °C |
| Storage Comment: | Shipped at 4°C. Upon delivery aliquot and store at -20°C for one year. Avoid freeze/thaw cycles. |
| Expiry Date: | 12 months |

Images



Immunohistochemistry

Image 1. Immunohistochemical analysis of Menin staining in human brain formalin fixed paraffin embedded tissue section. The section was pre-treated using heat mediated antigen retrieval with sodium citrate buffer (pH 6.0). The section was then incubated with the antibody at room temperature and detected using an HRP conjugated compact polymer system. DAB was used as the chromogen. The section was then counterstained with haematoxylin and mounted with DPX.



Western Blotting

Image 2. Western blot analysis of Menin expression in K562 (A), Jurkat (B), A431 (C) whole cell lysates.