

Datasheet for ABIN7296358
anti-MT-ND2 antibody (Center)[Go to Product page](#)

1 Image

Overview

Quantity:	100 µL
Target:	MT-ND2
Binding Specificity:	Center
Reactivity:	Human, Mouse, Rat
Host:	Rabbit
Clonality:	Polyclonal
Conjugate:	This MT-ND2 antibody is un-conjugated
Application:	Western Blotting (WB)

Product Details

Immunogen:	KLH-conjugated synthetic peptide encompassing a sequence within the center region of human MT-ND2.
Specificity:	Recognizes endogenous levels of MT-ND2 protein.
Characteristics:	Rabbit polyclonal antibody to MT-ND2
Purification:	The antibody was purified by immunogen affinity chromatography.

Target Details

Target:	MT-ND2
Alternative Name:	MT-ND2 (MT-ND2 Products)
Background:	MTND2, NADH2, ND2, NADH-ubiquinone oxidoreductase chain 2, NADH dehydrogenase

Target Details

	subunit 2
Gene ID:	4536
UniProt:	P03891 , P03893 , P11662

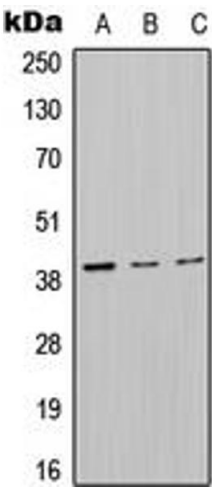
Application Details

Application Notes:	WB (1:500 - 1:1000)
Restrictions:	For Research Use only

Handling

Format:	Liquid
Buffer:	Liquid in 0.42 % Potassium phosphate, 0.87 % Sodium chloride, pH 7.3, 30 % glycerol, and 0.01 % sodium azide.
Preservative:	Sodium azide
Precaution of Use:	This product contains Sodium azide: a POISONOUS AND HAZARDOUS SUBSTANCE which should be handled by trained staff only.
Storage:	-20 °C
Storage Comment:	Shipped at 4°C. Upon delivery aliquot and store at -20°C for one year. Avoid freeze/thaw cycles.
Expiry Date:	12 months

Images



Western Blotting

Image 1. Western blot analysis of MT-ND2 expression in HepG2 (A), Raw264.7 (B), PC12 (C) whole cell lysates.