



[Go to Product page](#)

Datasheet for ABIN7296362
anti-MX2 antibody (Center)

1 Image

Overview

Quantity:	100 µL
Target:	MX2
Binding Specificity:	Center
Reactivity:	Human, Mouse, Rat, Monkey
Host:	Rabbit
Clonality:	Polyclonal
Conjugate:	This MX2 antibody is un-conjugated
Application:	Western Blotting (WB)

Product Details

Immunogen:	KLH-conjugated synthetic peptide encompassing a sequence within the center region of human MX2.
Specificity:	Recognizes endogenous levels of MX2 protein.
Characteristics:	Rabbit polyclonal antibody to MX2
Purification:	The antibody was purified by immunogen affinity chromatography.

Target Details

Target:	MX2
Alternative Name:	MX2 (MX2 Products)
Background:	Interferon-induced GTP-binding protein Mx2, Interferon-regulated resistance GTP-binding

Target Details

protein MxB, Myxovirus resistance protein 2, p78-related protein

Gene ID: 4600, 17858

UniProt: [P20592](#), [Q9WVP9](#), [P18589](#)

Application Details

Application Notes: WB (1:500 - 1:1000)

Restrictions: For Research Use only

Handling

Format: Liquid

Buffer: Liquid in 0.42 % Potassium phosphate, 0.87 % Sodium chloride, pH 7.3, 30 % glycerol, and 0.01 % sodium azide.

Preservative: Sodium azide

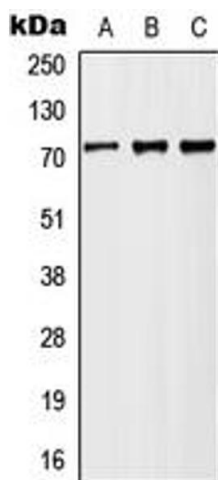
Precaution of Use: This product contains Sodium azide: a POISONOUS AND HAZARDOUS SUBSTANCE which should be handled by trained staff only.

Storage: -20 °C

Storage Comment: Shipped at 4°C. Upon delivery aliquot and store at -20°C for one year. Avoid freeze/thaw cycles.

Expiry Date: 12 months

Images



Western Blotting

Image 1. Western blot analysis of MX2 expression in HeLa (A), Raw264.7 (B), H9C2 (C) whole cell lysates.