

Datasheet for ABIN7296398
anti-NDUFS1 antibody (C-Term)



[Go to Product page](#)

2 Images

Overview

Quantity:	100 µL
Target:	NDUFS1
Binding Specificity:	C-Term
Reactivity:	Human, Rat, Mouse, Cow, Monkey
Host:	Rabbit
Clonality:	Polyclonal
Conjugate:	This NDUFS1 antibody is un-conjugated
Application:	Western Blotting (WB), Immunofluorescence (IF), Immunochromatography (IC)

Product Details

Immunogen:	KLH-conjugated synthetic peptide encompassing a sequence within the C-term region of human NDUFS1.
Specificity:	Recognizes endogenous levels of NDUFS1 protein.
Characteristics:	Rabbit polyclonal antibody to NDUFS1
Purification:	The antibody was purified by immunogen affinity chromatography.

Target Details

Target:	NDUFS1
Alternative Name:	NDUFS1 (NDUFS1 Products)
Background:	NADH-ubiquinone oxidoreductase 75 kDa subunit, mitochondrial, Complex I-75kD, CI-75kD

Target Details

Gene ID: 4719, 227197, 301458

UniProt: [P28331](#), [Q91VD9](#), [Q66HF1](#)

Application Details

Application Notes: WB (1:500 - 1:1000), IF/IC (1:100 - 1:500)

Restrictions: For Research Use only

Handling

Format: Liquid

Buffer: Liquid in 0.42 % Potassium phosphate, 0.87 % Sodium chloride, pH 7.3, 30 % glycerol, and 0.01 % sodium azide.

Preservative: Sodium azide

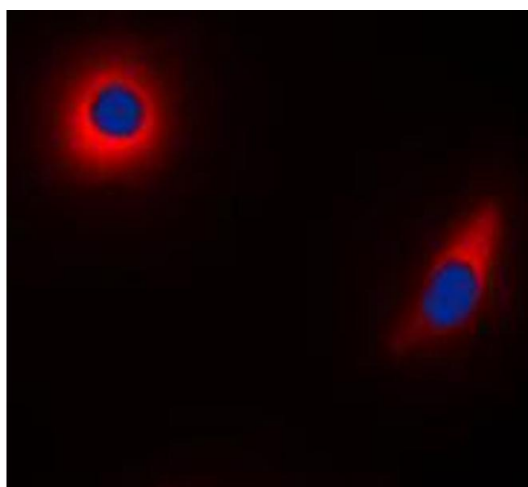
Precaution of Use: This product contains Sodium azide: a POISONOUS AND HAZARDOUS SUBSTANCE which should be handled by trained staff only.

Storage: -20 °C

Storage Comment: Shipped at 4°C. Upon delivery aliquot and store at -20°C for one year. Avoid freeze/thaw cycles.

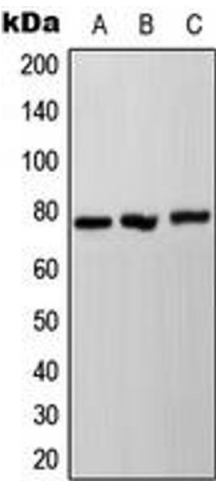
Expiry Date: 12 months

Images



Immunofluorescence

Image 1. Immunofluorescent analysis of NDUFS1 staining in HeLa cells. Formalin-fixed cells were permeabilized with 0.1% Triton X-100 in TBS for 5-10 minutes and blocked with 3% BSA-PBS for 30 minutes at room temperature. Cells were probed with the primary antibody in 3% BSA-PBS and incubated overnight at 4 °C in a humidified chamber. Cells were washed with PBST and incubated with a DyLight 594-conjugated secondary antibody (red) in PBS at room temperature in the dark. DAPI was used to stain the cell nuclei (blue).



Western Blotting

Image 2. Western blot analysis of NDUFS1 expression in HeLa (A), SP2/0 (B), PC12 (C) whole cell lysates.