

Datasheet for ABIN7296426  
**anti-NFKBIA antibody (N-Term)**



[Go to Product page](#)

3 Images

## Overview

Quantity:	100 µL
Target:	NFKBIA
Binding Specificity:	N-Term
Reactivity:	Human, Mouse, Cow, Pig, Monkey, Sheep
Host:	Rabbit
Clonality:	Polyclonal
Conjugate:	This NFKBIA antibody is un-conjugated
Application:	Western Blotting (WB), Immunohistochemistry (IHC), Immunofluorescence (IF), Immunoprecipitation (IP), Immunochromatography (IC)

## Product Details

Immunogen:	KLH-conjugated synthetic peptide encompassing a sequence within the N-term region of human IKB alpha.
Specificity:	Recognizes endogenous levels of IKB alpha protein.
Characteristics:	Rabbit polyclonal antibody to IKB alpha
Purification:	The antibody was purified by immunogen affinity chromatography.

## Target Details

Target:	NFKBIA
Alternative Name:	IKB alpha ( <a href="#">NFKBIA Products</a> )

## Target Details

---

Background:	IKBA, MAD3, NFKBI, NF-kappa-B inhibitor alpha, I-kappa-B-alpha, Ikb-alpha, IkappaBalphalpha, Major histocompatibility complex enhancer-binding protein MAD3
Gene ID:	4792, 18035
UniProt:	<a href="#">P25963</a> , <a href="#">Q9Z1E3</a>
Pathways:	<a href="#">NF-kappaB Signaling</a> , <a href="#">TCR Signaling</a> , <a href="#">TLR Signaling</a> , <a href="#">Fc-epsilon Receptor Signaling Pathway</a> , <a href="#">Activation of Innate immune Response</a> , <a href="#">Cellular Response to Molecule of Bacterial Origin</a> , <a href="#">Maintenance of Protein Location</a> , <a href="#">Hepatitis C</a> , <a href="#">Protein targeting to Nucleus</a> , <a href="#">Toll-Like Receptors Cascades</a> , <a href="#">BCR Signaling</a>

## Application Details

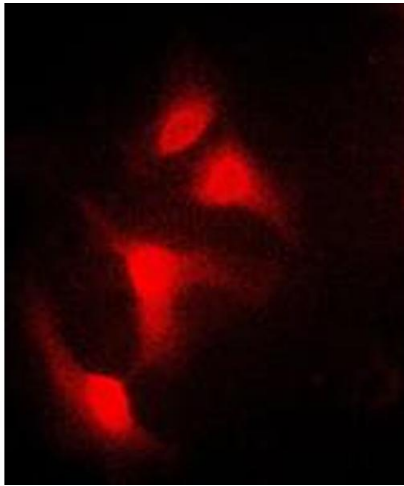
---

Application Notes:	WB (1:500 - 1:1000), IH (1:100 - 1:200), IF/IC (1:100 - 1:500), IP (1:10 - 1:100)
Restrictions:	For Research Use only

## Handling

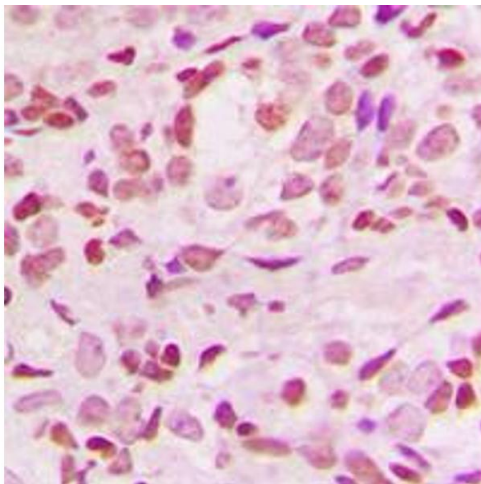
---

Format:	Liquid
Buffer:	Liquid in 0.42 % Potassium phosphate, 0.87 % Sodium chloride, pH 7.3, 30 % glycerol, and 0.01 % sodium azide.
Preservative:	Sodium azide
Precaution of Use:	This product contains Sodium azide: a POISONOUS AND HAZARDOUS SUBSTANCE which should be handled by trained staff only.
Storage:	-20 °C
Storage Comment:	Shipped at 4°C. Upon delivery aliquot and store at -20°C for one year. Avoid freeze/thaw cycles.
Expiry Date:	12 months



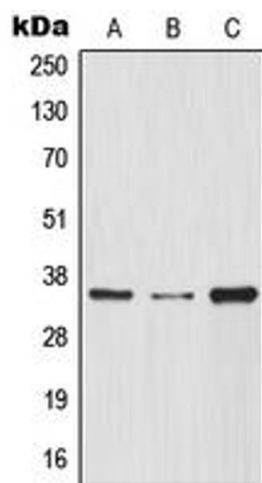
### Immunofluorescence

**Image 1.** Immunofluorescent analysis of IKB alpha staining in HeLa cells. Formalin-fixed cells were permeabilized with 0.1% Triton X-100 in TBS for 5-10 minutes and blocked with 3% BSA-PBS for 30 minutes at room temperature. Cells were probed with the primary antibody in 3% BSA-PBS and incubated overnight at 4 °C in a humidified chamber. Cells were washed with PBST and incubated with a DyLight 594-conjugated secondary antibody (red) in PBS at room temperature in the dark. DAPI was used to stain the cell nuclei (blue).



### Immunohistochemistry

**Image 2.** Immunohistochemical analysis of IKB alpha staining in human breast cancer formalin fixed paraffin embedded tissue section. The section was pre-treated using heat mediated antigen retrieval with sodium citrate buffer (pH 6.0). The section was then incubated with the antibody at room temperature and detected using an HRP conjugated compact polymer system. DAB was used as the chromogen. The section was then counterstained with haematoxylin and mounted with DPX.



### Western Blotting

**Image 3.** Western blot analysis of IKB alpha expression in THP1 (A), HeLa (B), Raw264.7 (C) whole cell lysates.