

Datasheet for ABIN7296472
anti-NPY2R antibody (N-Term)[Go to Product page](#)

2 Images

Overview

Quantity:	100 µL
Target:	NPY2R
Binding Specificity:	N-Term
Reactivity:	Human
Host:	Rabbit
Clonality:	Polyclonal
Conjugate:	This NPY2R antibody is un-conjugated
Application:	Western Blotting (WB), Immunofluorescence (IF), Immunochromatography (IC)

Product Details

Immunogen:	KLH-conjugated synthetic peptide encompassing a sequence within the N-term region of human NPY2R.
Specificity:	Recognizes endogenous levels of NPY2R protein.
Characteristics:	Rabbit polyclonal antibody to NPY2R
Purification:	The antibody was purified by immunogen affinity chromatography.

Target Details

Target:	NPY2R
Alternative Name:	NPY2R (NPY2R Products)
Background:	Neuropeptide Y receptor type 2, NPY2-R, NPY-Y2 receptor, Y2 receptor

Target Details

Gene ID:	4887
UniProt:	P49146
Pathways:	cAMP Metabolic Process , Synaptic Membrane , Feeding Behaviour

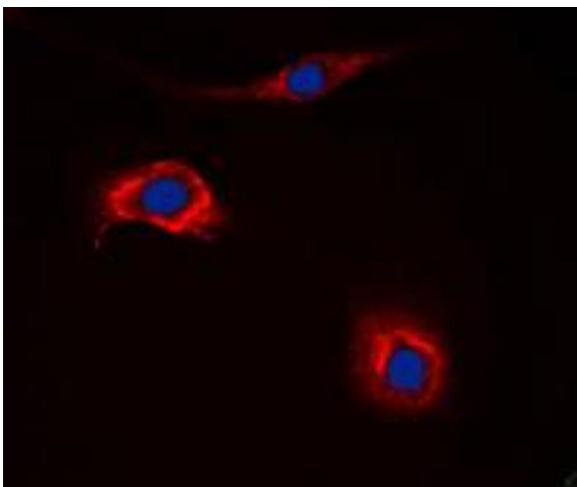
Application Details

Application Notes:	WB (1:500 - 1:1000), IF/IC (1:100 - 1:500)
Restrictions:	For Research Use only

Handling

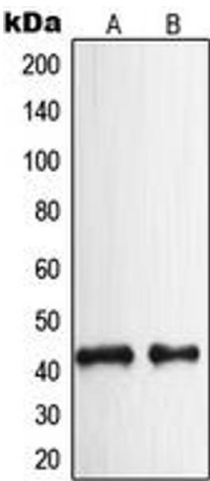
Format:	Liquid
Buffer:	Liquid in 0.42 % Potassium phosphate, 0.87 % Sodium chloride, pH 7.3, 30 % glycerol, and 0.01 % sodium azide.
Preservative:	Sodium azide
Precaution of Use:	This product contains Sodium azide: a POISONOUS AND HAZARDOUS SUBSTANCE which should be handled by trained staff only.
Storage:	-20 °C
Storage Comment:	Shipped at 4°C. Upon delivery aliquot and store at -20°C for one year. Avoid freeze/thaw cycles.
Expiry Date:	12 months

Images



Immunofluorescence

Image 1. Immunofluorescent analysis of NPY2R staining in HeLa cells. Formalin-fixed cells were permeabilized with 0.1% Triton X-100 in TBS for 5-10 minutes and blocked with 3% BSA-PBS for 30 minutes at room temperature. Cells were probed with the primary antibody in 3% BSA-PBS and incubated overnight at 4 °C in a humidified chamber. Cells were washed with PBST and incubated with a DyLight 594-conjugated secondary antibody (red) in PBS at room temperature in the dark. DAPI was used to stain the cell



nuclei (blue).

Western Blotting

Image 2. Western blot analysis of NPY2R expression in HeLa (A), rat brain (B) whole cell lysates.