

Datasheet for ABIN7296488
anti-OAT antibody (Center)[Go to Product page](#)

2 Images

Overview

Quantity:	100 µL
Target:	OAT
Binding Specificity:	Center
Reactivity:	Human, Mouse, Rat
Host:	Rabbit
Clonality:	Polyclonal
Conjugate:	This OAT antibody is un-conjugated
Application:	Western Blotting (WB), Immunofluorescence (IF), Immunochromatography (IC)

Product Details

Immunogen:	KLH-conjugated synthetic peptide encompassing a sequence within the center region of human OAT.
Specificity:	Recognizes endogenous levels of OAT protein.
Characteristics:	Rabbit polyclonal antibody to OAT
Purification:	The antibody was purified by immunogen affinity chromatography.

Target Details

Target:	OAT
Alternative Name:	OAT (OAT Products)
Background:	Ornithine aminotransferase, mitochondrial, Ornithine delta-aminotransferase, Ornithine--oxo-

Target Details

	acid aminotransferase
Gene ID:	4942, 18242, 64313
UniProt:	P04181 , P29758 , P04182

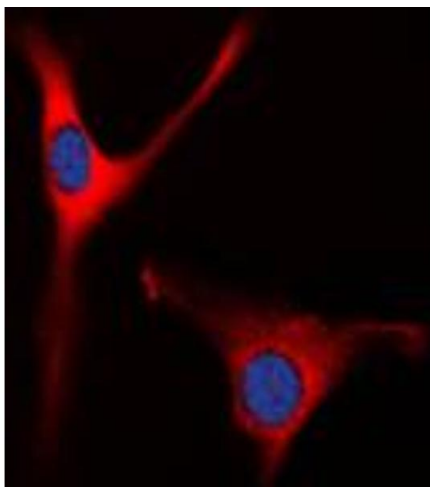
Application Details

Application Notes:	WB (1:500 - 1:1000), IF/IC (1:100 - 1:500)
Restrictions:	For Research Use only

Handling

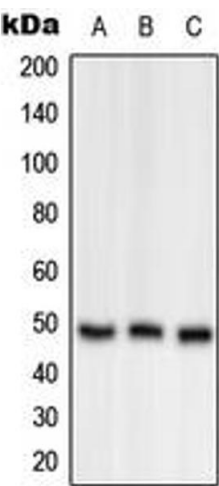
Format:	Liquid
Buffer:	Liquid in 0.42 % Potassium phosphate, 0.87 % Sodium chloride, pH 7.3, 30 % glycerol, and 0.01 % sodium azide.
Preservative:	Sodium azide
Precaution of Use:	This product contains Sodium azide: a POISONOUS AND HAZARDOUS SUBSTANCE which should be handled by trained staff only.
Storage:	-20 °C
Storage Comment:	Shipped at 4°C. Upon delivery aliquot and store at -20°C for one year. Avoid freeze/thaw cycles.
Expiry Date:	12 months

Images



Immunofluorescence

Image 1. Immunofluorescent analysis of OAT staining in Raw264.7 cells. Formalin-fixed cells were permeabilized with 0.1% Triton X-100 in TBS for 5-10 minutes and blocked with 3% BSA-PBS for 30 minutes at room temperature. Cells were probed with the primary antibody in 3% BSA-PBS and incubated overnight at 4 °C in a humidified chamber. Cells were washed with PBST and incubated with a DyLight 594-conjugated secondary antibody (red) in PBS at room temperature in the dark. DAPI was used to stain the cell



nuclei (blue).

Western Blotting

Image 2. Western blot analysis of OAT expression in A549 (A), Raw264.7 (B), H9C2 (C) whole cell lysates.