

Datasheet for ABIN7296496

anti-SIX Homeobox 6 antibody (Center)**2** Images[Go to Product page](#)

Overview

Quantity:	100 µL
Target:	SIX Homeobox 6 (SIX6)
Binding Specificity:	Center
Reactivity:	Human, Mouse, Rat, Chicken
Host:	Rabbit
Clonality:	Polyclonal
Conjugate:	This SIX Homeobox 6 antibody is un-conjugated
Application:	Western Blotting (WB), Immunofluorescence (IF), Immunochromatography (IC)

Product Details

Immunogen:	KLH-conjugated synthetic peptide encompassing a sequence within the center region of human SIX6.
Specificity:	Recognizes endogenous levels of SIX6 protein.
Characteristics:	Rabbit polyclonal antibody to SIX6
Purification:	The antibody was purified by immunogen affinity chromatography.

Target Details

Target:	SIX Homeobox 6 (SIX6)
Alternative Name:	SIX6 (SIX6 Products)
Background:	OPTX2, SIX9, Homeobox protein SIX6, Homeodomain protein OPTX2, Optic homeobox 2, Sine

Target Details

oculis homeobox homolog 6

Gene ID: 4990, 20476

UniProt: [O95475](#), [Q9QZ28](#)

Application Details

Application Notes: WB (1:500 - 1:1000), IF/IC (1:100 - 1:500)

Restrictions: For Research Use only

Handling

Format: Liquid

Buffer: Liquid in 0.42 % Potassium phosphate, 0.87 % Sodium chloride, pH 7.3, 30 % glycerol, and 0.01 % sodium azide.

Preservative: Sodium azide

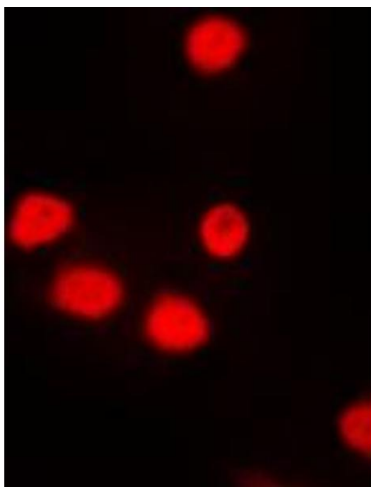
Precaution of Use: This product contains Sodium azide: a POISONOUS AND HAZARDOUS SUBSTANCE which should be handled by trained staff only.

Storage: -20 °C

Storage Comment: Shipped at 4°C. Upon delivery aliquot and store at -20°C for one year. Avoid freeze/thaw cycles.

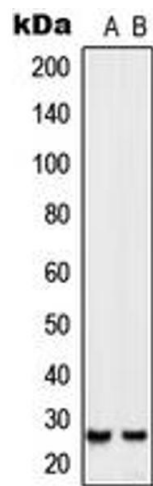
Expiry Date: 12 months

Images



Immunofluorescence

Image 1. Immunofluorescent analysis of SIX6 staining in NIH3T3 cells. Formalin-fixed cells were permeabilized with 0.1% Triton X-100 in TBS for 5-10 minutes and blocked with 3% BSA-PBS for 30 minutes at room temperature. Cells were probed with the primary antibody in 3% BSA-PBS and incubated overnight at 4 °C in a humidified chamber. Cells were washed with PBST and incubated with a DyLight 594-conjugated secondary antibody (red) in PBS at room temperature in the dark. DAPI was used to stain the cell



nuclei (blue).

Western Blotting

Image 2. Western blot analysis of SIX6 expression in Jurkat (A), NIH3T3 (B) whole cell lysates.