

Datasheet for ABIN7296502

anti-Claudin 11 antibody (C-Term)



[Go to Product page](#)

1 Image

Overview

Quantity:	100 µL
Target:	Claudin 11 (CLDN11)
Binding Specificity:	C-Term
Reactivity:	Human, Mouse, Rat, Cow, Dog, Rabbit, Chicken
Host:	Rabbit
Clonality:	Polyclonal
Conjugate:	This Claudin 11 antibody is un-conjugated
Application:	Western Blotting (WB)

Product Details

Immunogen:	KLH-conjugated synthetic peptide encompassing a sequence within the C-term region of human Claudin 11.
Specificity:	Recognizes endogenous levels of Claudin 11 protein.
Characteristics:	Rabbit polyclonal antibody to Claudin 11
Purification:	The antibody was purified by immunogen affinity chromatography.

Target Details

Target:	Claudin 11 (CLDN11)
Alternative Name:	Claudin 11 (CLDN11 Products)
Background:	OSP, OTM, Claudin-11, Oligodendrocyte-specific protein

Target Details

Gene ID:	5010, 18417
UniProt:	O75508 , Q60771 , Q99P82
Pathways:	Hepatitis C

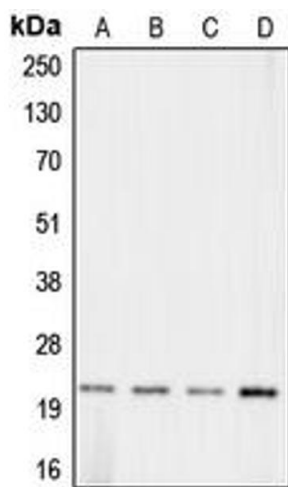
Application Details

Application Notes:	WB (1:500 - 1:1000)
Restrictions:	For Research Use only

Handling

Format:	Liquid
Buffer:	Liquid in 0.42 % Potassium phosphate, 0.87 % Sodium chloride, pH 7.3, 30 % glycerol, and 0.01 % sodium azide.
Preservative:	Sodium azide
Precaution of Use:	This product contains Sodium azide: a POISONOUS AND HAZARDOUS SUBSTANCE which should be handled by trained staff only.
Storage:	-20 °C
Storage Comment:	Shipped at 4°C. Upon delivery aliquot and store at -20°C for one year. Avoid freeze/thaw cycles.
Expiry Date:	12 months

Images



Western Blotting

Image 1. Western blot analysis of Claudin 11 expression in HeLa (A), Raw264.7 (B), mouse brain (C), rat heart (D) whole cell lysates.