

Datasheet for ABIN7296506
anti-P2RX1 antibody (Center)



[Go to Product page](#)

1 Image

Overview

Quantity:	100 µL
Target:	P2RX1
Binding Specificity:	Center
Reactivity:	Human, Rat, Mouse, Rabbit, Monkey
Host:	Rabbit
Clonality:	Polyclonal
Conjugate:	This P2RX1 antibody is un-conjugated
Application:	Western Blotting (WB)

Product Details

Immunogen:	KLH-conjugated synthetic peptide encompassing a sequence within the center region of human P2X1.
Specificity:	Recognizes endogenous levels of P2X1 protein.
Characteristics:	Rabbit polyclonal antibody to P2X1
Purification:	The antibody was purified by immunogen affinity chromatography.

Target Details

Target:	P2RX1
Alternative Name:	P2X1 (P2RX1 Products)
Background:	P2X1, P2X purinoceptor 1, P2X1, ATP receptor, Purinergic receptor

Target Details

Gene ID:	5023, 18436, 25505
UniProt:	P51575 , P51576 , P47824
Pathways:	Positive Regulation of Endopeptidase Activity

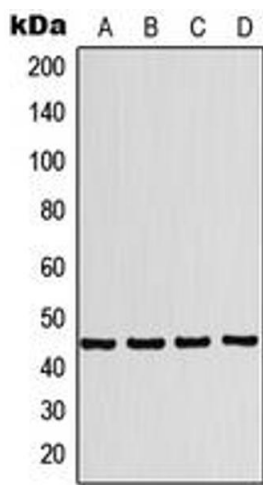
Application Details

Application Notes:	WB (1:500 - 1:1000)
Restrictions:	For Research Use only

Handling

Format:	Liquid
Buffer:	Liquid in 0.42 % Potassium phosphate, 0.87 % Sodium chloride, pH 7.3, 30 % glycerol, and 0.01 % sodium azide.
Preservative:	Sodium azide
Precaution of Use:	This product contains Sodium azide: a POISONOUS AND HAZARDOUS SUBSTANCE which should be handled by trained staff only.
Storage:	-20 °C
Storage Comment:	Shipped at 4°C. Upon delivery aliquot and store at -20°C for one year. Avoid freeze/thaw cycles.
Expiry Date:	12 months

Images



Western Blotting

Image 1. Western blot analysis of P2X1 expression in K562 (A), A549 (B), SP2/0 (C), PC12 (D) whole cell lysates.