

Datasheet for ABIN7296544
anti-PDGFA antibody (Center)[Go to Product page](#)

2 Images

Overview

Quantity:	100 µL
Target:	PDGFA
Binding Specificity:	Center
Reactivity:	Human, Mouse, Rat, Rabbit
Host:	Rabbit
Clonality:	Polyclonal
Conjugate:	This PDGFA antibody is un-conjugated
Application:	Western Blotting (WB), Immunohistochemistry (IHC)

Product Details

Immunogen:	KLH-conjugated synthetic peptide encompassing a sequence within the center region of human PDGFA.
Specificity:	Recognizes endogenous levels of PDGFA protein.
Characteristics:	Rabbit polyclonal antibody to PDGFA
Purification:	The antibody was purified by immunogen affinity chromatography.

Target Details

Target:	PDGFA
Alternative Name:	PDGFA (PDGFA Products)
Background:	PDGF1, Platelet-derived growth factor subunit A, PDGF subunit A, PDGF-1, Platelet-derived

Target Details

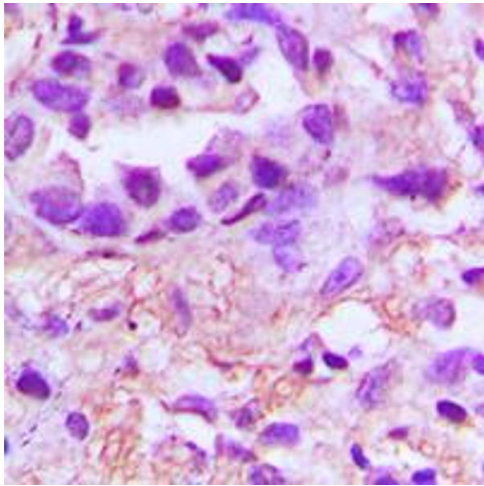
	growth factor A chain, Platelet-derived growth factor alpha polypeptide
Gene ID:	5154, 18590, 25266
UniProt:	P04085 , P20033 , P28576
Pathways:	RTK Signaling , Fc-epsilon Receptor Signaling Pathway , EGFR Signaling Pathway , Neurotrophin Signaling Pathway , Smooth Muscle Cell Migration , Platelet-derived growth Factor Receptor Signaling

Application Details

Application Notes:	WB (1:500 - 1:1000), IH (1:100 - 1:200)
Restrictions:	For Research Use only

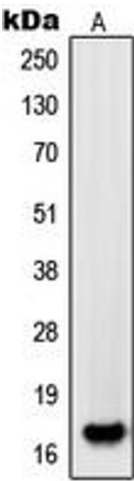
Handling

Format:	Liquid
Buffer:	Liquid in 0.42 % Potassium phosphate, 0.87 % Sodium chloride, pH 7.3, 30 % glycerol, and 0.01 % sodium azide.
Preservative:	Sodium azide
Precaution of Use:	This product contains Sodium azide: a POISONOUS AND HAZARDOUS SUBSTANCE which should be handled by trained staff only.
Storage:	-20 °C
Storage Comment:	Shipped at 4°C. Upon delivery aliquot and store at -20°C for one year. Avoid freeze/thaw cycles.
Expiry Date:	12 months



Immunohistochemistry

Image 1. Immunohistochemical analysis of PDGFA staining in human lung cancer formalin fixed paraffin embedded tissue section. The section was pre-treated using heat mediated antigen retrieval with sodium citrate buffer (pH 6.0). The section was then incubated with the antibody at room temperature and detected using an HRP conjugated compact polymer system. DAB was used as the chromogen. The section was then counterstained with haematoxylin and mounted with DPX.



Western Blotting

Image 2. Western blot analysis of PDGFA expression in HL60 (A) whole cell lysates.