

Datasheet for ABIN7296574
anti-PFN2 antibody (Center)



[Go to Product page](#)

1 Image

Overview

Quantity:	100 µL
Target:	PFN2
Binding Specificity:	Center
Reactivity:	Human, Mouse, Rat, Cow, Monkey
Host:	Rabbit
Clonality:	Polyclonal
Conjugate:	This PFN2 antibody is un-conjugated
Application:	Western Blotting (WB)

Product Details

Immunogen:	KLH-conjugated synthetic peptide encompassing a sequence within the center region of human Profilin 2.
Specificity:	Recognizes endogenous levels of Profilin 2 protein.
Characteristics:	Rabbit polyclonal antibody to Profilin 2
Purification:	The antibody was purified by immunogen affinity chromatography.

Target Details

Target:	PFN2
Alternative Name:	Profilin 2 (PFN2 Products)
Background:	Profilin-2, Profilin II

Target Details

Gene ID:	5217, 18645, 100909840
UniProt:	P35080, Q9JJV2, Q9EPC6
Pathways:	Regulation of Actin Filament Polymerization, Synaptic Vesicle Exocytosis

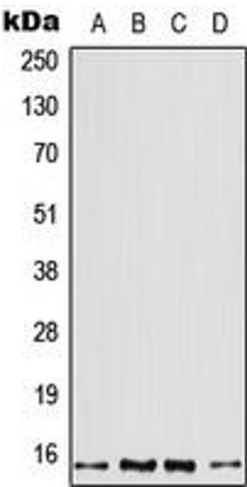
Application Details

Application Notes:	WB (1:500 - 1:1000)
Restrictions:	For Research Use only

Handling

Format:	Liquid
Buffer:	Liquid in 0.42 % Potassium phosphate, 0.87 % Sodium chloride, pH 7.3, 30 % glycerol, and 0.01 % sodium azide.
Preservative:	Sodium azide
Precaution of Use:	This product contains Sodium azide: a POISONOUS AND HAZARDOUS SUBSTANCE which should be handled by trained staff only.
Storage:	-20 °C
Storage Comment:	Shipped at 4°C. Upon delivery aliquot and store at -20°C for one year. Avoid freeze/thaw cycles.
Expiry Date:	12 months

Images



Western Blotting

Image 1. Western blot analysis of Profilin 2 expression in A431 (A), H1299 (B), mouse brain (C), rat skeletal muscle (D) whole cell lysates.