

Datasheet for ABIN7296588
anti-SERPINB5 antibody (Center)



[Go to Product page](#)

3 Images

Overview

Quantity:	100 µL
Target:	SERPINB5
Binding Specificity:	Center
Reactivity:	Human, Mouse, Rat, Cow
Host:	Rabbit
Clonality:	Polyclonal
Conjugate:	This SERPINB5 antibody is un-conjugated
Application:	Western Blotting (WB), Immunohistochemistry (IHC), Immunofluorescence (IF), Immunochromatography (IC)

Product Details

Immunogen:	KLH-conjugated synthetic peptide encompassing a sequence within the center region of human Serpin B5.
Specificity:	Recognizes endogenous levels of Serpin B5 protein.
Characteristics:	Rabbit polyclonal antibody to Serpin B5
Purification:	The antibody was purified by immunogen affinity chromatography.

Target Details

Target:	SERPINB5
Alternative Name:	Serpin B5 (SERPINB5 Products)

Target Details

Background: PI5, Serpin B5, Maspin, Peptidase inhibitor 5, PI-5

Gene ID: 5268, 20724, 116589

UniProt: [P36952](#), [P70124](#), [P70564](#)

Pathways: [p53 Signaling](#)

Application Details

Application Notes: WB (1:500 - 1:1000), IH (1:100 - 1:200), IF/IC (1:100 - 1:500)

Restrictions: For Research Use only

Handling

Format: Liquid

Buffer: Liquid in 0.42 % Potassium phosphate, 0.87 % Sodium chloride, pH 7.3, 30 % glycerol, and 0.01 % sodium azide.

Preservative: Sodium azide

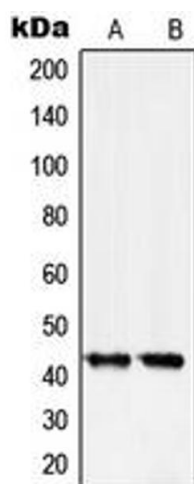
Precaution of Use: This product contains Sodium azide: a POISONOUS AND HAZARDOUS SUBSTANCE which should be handled by trained staff only.

Storage: -20 °C

Storage Comment: Shipped at 4°C. Upon delivery aliquot and store at -20°C for one year. Avoid freeze/thaw cycles.

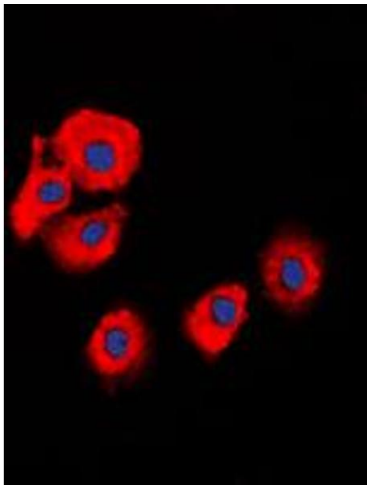
Expiry Date: 12 months

Images



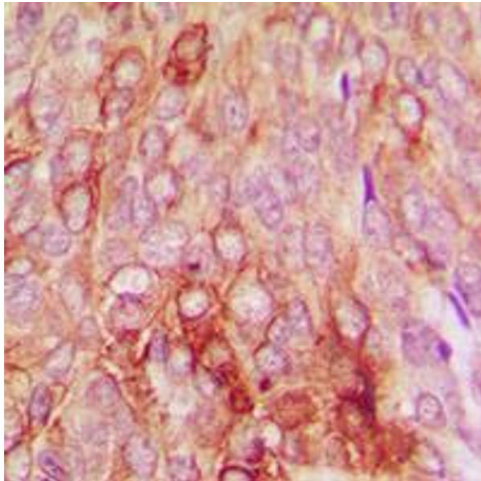
Western Blotting

Image 1. Western blot analysis of Serpin B5 expression in A431 (A), HeLa (B) whole cell lysates.



Immunofluorescence

Image 2. Immunofluorescent analysis of Serpin B5 staining in HeLa cells. Formalin-fixed cells were permeabilized with 0.1% Triton X-100 in TBS for 5-10 minutes and blocked with 3% BSA-PBS for 30 minutes at room temperature. Cells were probed with the primary antibody in 3% BSA-PBS and incubated overnight at 4 °C in a humidified chamber. Cells were washed with PBST and incubated with a DyLight 594-conjugated secondary antibody (red) in PBS at room temperature in the dark. DAPI was used to stain the cell nuclei (blue).



Immunohistochemistry

Image 3. Immunohistochemical analysis of Serpin B5 staining in human breast cancer formalin fixed paraffin embedded tissue section. The section was pre-treated using heat mediated antigen retrieval with sodium citrate buffer (pH 6.0). The section was then incubated with the antibody at room temperature and detected using an HRP conjugated compact polymer system. DAB was used as the chromogen. The section was then counterstained with haematoxylin and mounted with DPX.