

Datasheet for ABIN7296590
anti-SERPINB9 antibody (Center)[Go to Product page](#)

2 Images

Overview

Quantity:	100 µL
Target:	SERPINB9
Binding Specificity:	Center
Reactivity:	Human, Mouse, Rat, Monkey
Host:	Rabbit
Clonality:	Polyclonal
Conjugate:	This SERPINB9 antibody is un-conjugated
Application:	Western Blotting (WB), Immunohistochemistry (IHC), Immunoprecipitation (IP)

Product Details

Immunogen:	KLH-conjugated synthetic peptide encompassing a sequence within the center region of human Serpin B9.
Specificity:	Recognizes endogenous levels of Serpin B9 protein.
Characteristics:	Rabbit polyclonal antibody to Serpin B9
Purification:	The antibody was purified by immunogen affinity chromatography.

Target Details

Target:	SERPINB9
Alternative Name:	Serpin B9 (SERPINB9 Products)
Background:	PI9, Serpin B9, Cytoplasmic antiproteinase 3, CAP-3, CAP3, Peptidase inhibitor 9, PI-9

Target Details

Gene ID: 5272

UniProt: [P50453](#)

Application Details

Application Notes: WB (1:500 - 1:1000), IH (1:100 - 1:200), IP (1:10 - 1:100)

Restrictions: For Research Use only

Handling

Format: Liquid

Buffer: Liquid in 0.42 % Potassium phosphate, 0.87 % Sodium chloride, pH 7.3, 30 % glycerol, and 0.01 % sodium azide.

Preservative: Sodium azide

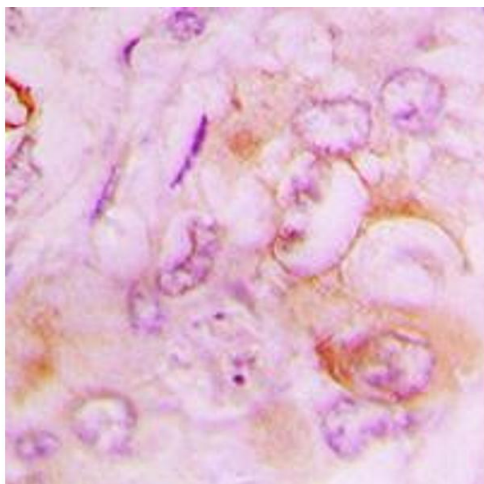
Precaution of Use: This product contains Sodium azide: a POISONOUS AND HAZARDOUS SUBSTANCE which should be handled by trained staff only.

Storage: -20 °C

Storage Comment: Shipped at 4°C. Upon delivery aliquot and store at -20°C for one year. Avoid freeze/thaw cycles.

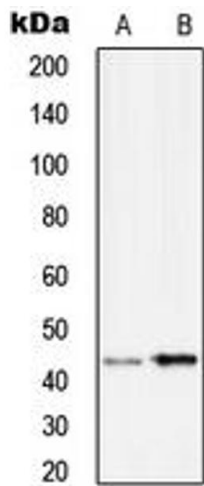
Expiry Date: 12 months

Images



Immunohistochemistry

Image 1. Immunohistochemical analysis of Serpin B9 staining in human lung cancer formalin fixed paraffin embedded tissue section. The section was pre-treated using heat mediated antigen retrieval with sodium citrate buffer (pH 6.0). The section was then incubated with the antibody at room temperature and detected using an HRP conjugated compact polymer system. DAB was used as the chromogen. The section was then counterstained with haematoxylin and mounted with DPX.



Western Blotting

Image 2. Western blot analysis of Serpin B9 expression in Ramos (A), HuvEc (B) whole cell lysates.