



Datasheet for ABIN7296622  
**anti-PML antibody (N-Term)**



[Go to Product page](#)

3 Images

Overview

Quantity:	100 µL
Target:	PML
Binding Specificity:	N-Term
Reactivity:	Human
Host:	Rabbit
Clonality:	Polyclonal
Conjugate:	This PML antibody is un-conjugated
Application:	Western Blotting (WB), Immunohistochemistry (IHC), Immunofluorescence (IF), Immunochromatography (IC)

Product Details

Immunogen:	KLH-conjugated synthetic peptide encompassing a sequence within the N-term region of human PML.
Specificity:	Recognizes endogenous levels of PML protein.
Characteristics:	Rabbit polyclonal antibody to PML
Purification:	The antibody was purified by immunogen affinity chromatography.

Target Details

Target:	PML
Alternative Name:	PML ( <a href="#">PML Products</a> )

## Target Details

---

Background:	MYL, PP8675, RNF71, TRIM19, Protein PML, Promyelocytic leukemia protein, RING finger protein 71, Tripartite motif-containing protein 19
Gene ID:	5371
UniProt:	<a href="#">P29590</a>
Pathways:	<a href="#">p53 Signaling</a> , <a href="#">Retinoic Acid Receptor Signaling Pathway</a> , <a href="#">Maintenance of Protein Location</a> , <a href="#">Positive Regulation of Endopeptidase Activity</a> , <a href="#">Protein targeting to Nucleus</a>

## Application Details

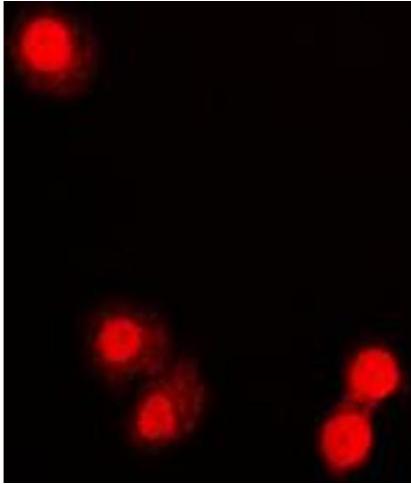
---

Application Notes:	WB (1:500 - 1:1000), IH (1:100 - 1:200), IF/IC (1:100 - 1:500)
Restrictions:	For Research Use only

## Handling

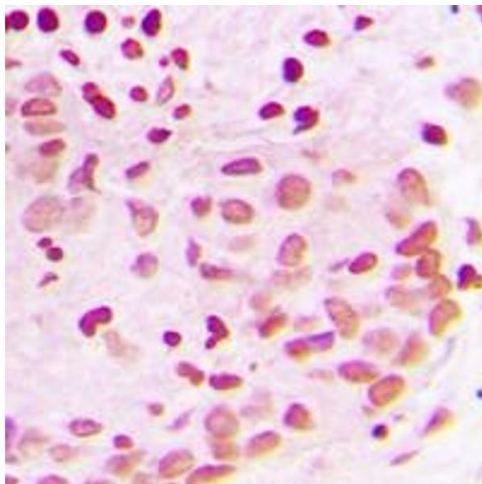
---

Format:	Liquid
Buffer:	Liquid in 0.42 % Potassium phosphate, 0.87 % Sodium chloride, pH 7.3, 30 % glycerol, and 0.01 % sodium azide.
Preservative:	Sodium azide
Precaution of Use:	This product contains Sodium azide: a POISONOUS AND HAZARDOUS SUBSTANCE which should be handled by trained staff only.
Storage:	-20 °C
Storage Comment:	Shipped at 4°C. Upon delivery aliquot and store at -20°C for one year. Avoid freeze/thaw cycles.
Expiry Date:	12 months



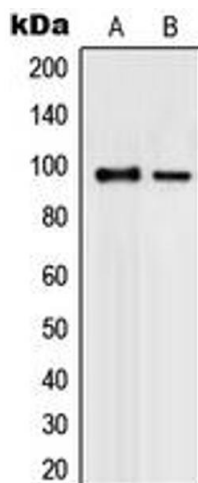
### Immunofluorescence

**Image 1.** Immunofluorescent analysis of PML staining in COLO320 cells. Formalin-fixed cells were permeabilized with 0.1% Triton X-100 in TBS for 5-10 minutes and blocked with 3% BSA-PBS for 30 minutes at room temperature. Cells were probed with the primary antibody in 3% BSA-PBS and incubated overnight at 4 °C in a humidified chamber. Cells were washed with PBST and incubated with a DyLight 594-conjugated secondary antibody (red) in PBS at room temperature in the dark. DAPI was used to stain the cell nuclei (blue).



### Immunohistochemistry

**Image 2.** Immunohistochemical analysis of PML staining in human breast cancer formalin fixed paraffin embedded tissue section. The section was pre-treated using heat mediated antigen retrieval with sodium citrate buffer (pH 6.0). The section was then incubated with the antibody at room temperature and detected using an HRP conjugated compact polymer system. DAB was used as the chromogen. The section was then counterstained with haematoxylin and mounted with DPX.



### Western Blotting

**Image 3.** Western blot analysis of PML expression in K562 (A), COLO320 (B) whole cell lysates.