



[Go to Product page](#)

Datasheet for ABIN7296630  
**anti-POLB antibody (C-Term)**

2 Images

Overview

Quantity:	100 µL
Target:	POLB
Binding Specificity:	C-Term
Reactivity:	Human, Mouse, Rat, Cow, Chicken
Host:	Rabbit
Clonality:	Polyclonal
Conjugate:	This POLB antibody is un-conjugated
Application:	Western Blotting (WB), Immunohistochemistry (IHC)

Product Details

Immunogen:	KLH-conjugated synthetic peptide encompassing a sequence within the C-term region of human DNA Polymerase beta.
Specificity:	Recognizes endogenous levels of DNA Polymerase beta protein.
Characteristics:	Rabbit polyclonal antibody to DNA Polymerase beta
Purification:	The antibody was purified by immunogen affinity chromatography.

Target Details

Target:	POLB
Alternative Name:	DNA Polymerase beta ( <a href="#">POLB Products</a> )
Background:	DNA polymerase beta

## Target Details

Gene ID: 5423, 18970, 29240

UniProt: [P06746](#), [Q8K409](#), [P06766](#)

Pathways: [DNA Damage Repair](#)

## Application Details

Application Notes: WB (1:500 - 1:1000), IH (1:100 - 1:200)

Restrictions: For Research Use only

## Handling

Format: Liquid

Buffer: Liquid in 0.42 % Potassium phosphate, 0.87 % Sodium chloride, pH 7.3, 30 % glycerol, and 0.01 % sodium azide.

Preservative: Sodium azide

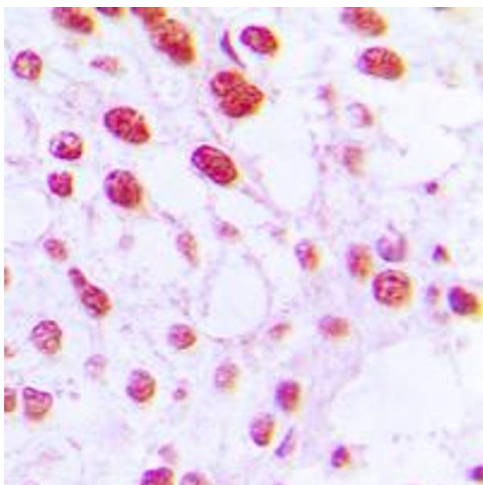
Precaution of Use: This product contains Sodium azide: a POISONOUS AND HAZARDOUS SUBSTANCE which should be handled by trained staff only.

Storage: -20 °C

Storage Comment: Shipped at 4°C. Upon delivery aliquot and store at -20°C for one year. Avoid freeze/thaw cycles.

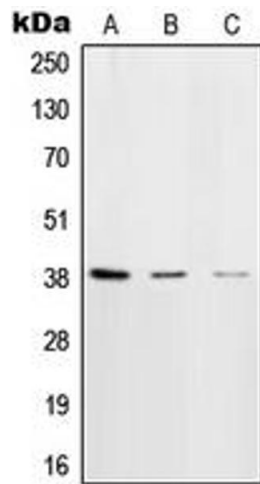
Expiry Date: 12 months

## Images



### Immunohistochemistry

**Image 1.** Immunohistochemical analysis of DNA Polymerase beta staining in human breast cancer formalin fixed paraffin embedded tissue section. The section was pre-treated using heat mediated antigen retrieval with sodium citrate buffer (pH 6.0). The section was then incubated with the antibody at room temperature and detected using an HRP conjugated compact polymer system. DAB was used as the chromogen. The section was then counterstained with haematoxylin and mounted with



DPX.

### Western Blotting

**Image 2.** Western blot analysis of DNA Polymerase beta expression in HeLa (A), NIH3T3 (B), rat brain (C) whole cell lysates.