

Datasheet for ABIN7296660
anti-PPP2R1B antibody (C-Term)[Go to Product page](#)

2 Images

Overview

Quantity:	100 µL
Target:	PPP2R1B
Binding Specificity:	C-Term
Reactivity:	Human, Mouse, Rat, Monkey, Pig
Host:	Rabbit
Clonality:	Polyclonal
Conjugate:	This PPP2R1B antibody is un-conjugated
Application:	Western Blotting (WB), Immunofluorescence (IF), Immunochromatography (IC)

Product Details

Immunogen:	KLH-conjugated synthetic peptide encompassing a sequence within the C-term region of human PPP2R1B.
Specificity:	Recognizes endogenous levels of PPP2R1B protein.
Characteristics:	Rabbit polyclonal antibody to PPP2R1B
Purification:	The antibody was purified by immunogen affinity chromatography.

Target Details

Target:	PPP2R1B
Alternative Name:	PPP2R1B (PPP2R1B Products)
Background:	Serine/threonine-protein phosphatase 2A 65 kDa regulatory subunit A beta isoform, PP2A

Target Details

	subunit A isoform PR65-beta, PP2A subunit A isoform R1-beta
Gene ID:	5519, 73699, 315648
UniProt:	P30154 , Q7TNP2 , Q4QQT4
Pathways:	PI3K-Akt Signaling , Mitotic G1-G1/S Phases , Hepatitis C , Toll-Like Receptors Cascades

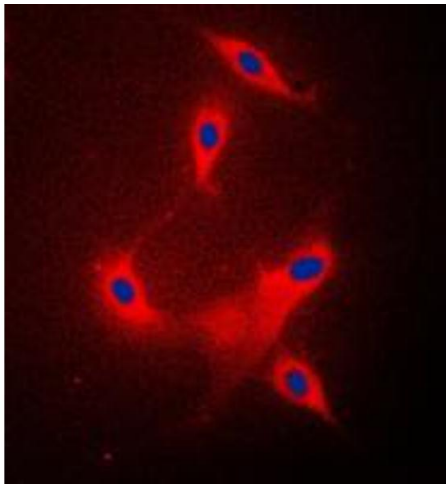
Application Details

Application Notes:	WB (1:500 - 1:1000), IF/IC (1:100 - 1:500)
Restrictions:	For Research Use only

Handling

Format:	Liquid
Buffer:	Liquid in 0.42 % Potassium phosphate, 0.87 % Sodium chloride, pH 7.3, 30 % glycerol, and 0.01 % sodium azide.
Preservative:	Sodium azide
Precaution of Use:	This product contains Sodium azide: a POISONOUS AND HAZARDOUS SUBSTANCE which should be handled by trained staff only.
Storage:	-20 °C
Storage Comment:	Shipped at 4°C. Upon delivery aliquot and store at -20°C for one year. Avoid freeze/thaw cycles.
Expiry Date:	12 months

Images



Immunofluorescence

Image 1. Immunofluorescent analysis of PPP2R1B staining in Raw264.7 cells. Formalin-fixed cells were permeabilized with 0.1% Triton X-100 in TBS for 5-10 minutes and blocked with 3% BSA-PBS for 30 minutes at room temperature. Cells were probed with the primary antibody in 3% BSA-PBS and incubated overnight at 4 °C in a humidified chamber. Cells were washed with PBST and incubated with a DyLight 594-conjugated secondary antibody (red) in PBS at room

temperature in the dark. DAPI was used to stain the cell nuclei (blue).

Western Blotting

Image 2. Western blot analysis of PPP2R1B expression in HeLa (A), Raw264.7 (B), H9C2 (C) whole cell lysates.

