

Datasheet for ABIN7296662  
**anti-PPP2R5A antibody (Center)**[Go to Product page](#)

## 2 Images

## Overview

Quantity:	100 µL
Target:	PPP2R5A
Binding Specificity:	Center
Reactivity:	Human, Mouse, Rat, Cow, Pig, Monkey
Host:	Rabbit
Clonality:	Polyclonal
Conjugate:	This PPP2R5A antibody is un-conjugated
Application:	Western Blotting (WB), Immunofluorescence (IF), Immunochromatography (IC)

## Product Details

Immunogen:	KLH-conjugated synthetic peptide encompassing a sequence within the center region of human PPP2R5A.
Specificity:	Recognizes endogenous levels of PPP2R5A protein.
Characteristics:	Rabbit polyclonal antibody to PPP2R5A
Purification:	The antibody was purified by immunogen affinity chromatography.

## Target Details

Target:	PPP2R5A
Alternative Name:	PPP2R5A ( <a href="#">PPP2R5A Products</a> )
Background:	Serine/threonine-protein phosphatase 2A 56 kDa regulatory subunit alpha isoform, PP2A B

## Target Details

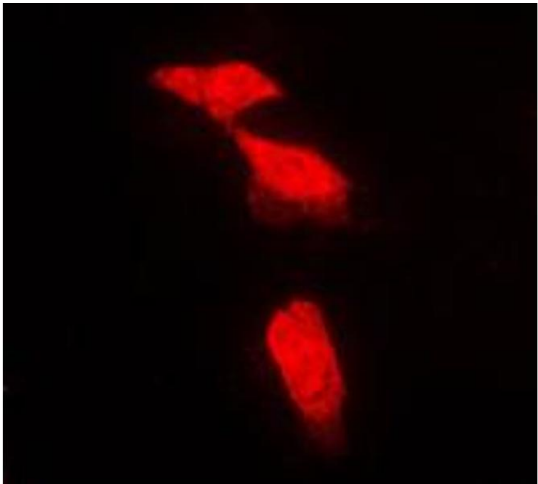
	subunit isoform B'-alpha, PP2A B subunit isoform B56-alpha, PP2A B subunit isoform PR61-alpha, PR61alpha, PP2A B subunit isoform R5-alpha
Gene ID:	5525, 226849
UniProt:	<a href="#">Q15172</a> , <a href="#">Q6PD03</a>
Pathways:	<a href="#">PI3K-Akt Signaling</a>

## Application Details

Application Notes:	WB (1:500 - 1:1000), IF/IC (1:100 - 1:500)
Restrictions:	For Research Use only

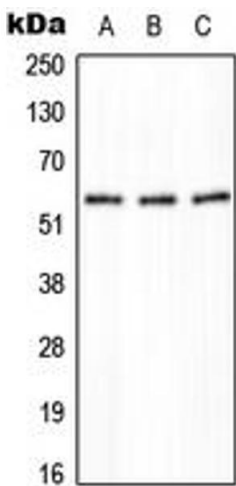
## Handling

Format:	Liquid
Buffer:	Liquid in 0.42 % Potassium phosphate, 0.87 % Sodium chloride, pH 7.3, 30 % glycerol, and 0.01 % sodium azide.
Preservative:	Sodium azide
Precaution of Use:	This product contains Sodium azide: a POISONOUS AND HAZARDOUS SUBSTANCE which should be handled by trained staff only.
Storage:	-20 °C
Storage Comment:	Shipped at 4°C. Upon delivery aliquot and store at -20°C for one year. Avoid freeze/thaw cycles.
Expiry Date:	12 months



### Immunofluorescence

**Image 1.** Immunofluorescent analysis of PPP2R5A staining in NIH3T3 cells. Formalin-fixed cells were permeabilized with 0.1% Triton X-100 in TBS for 5-10 minutes and blocked with 3% BSA-PBS for 30 minutes at room temperature. Cells were probed with the primary antibody in 3% BSA-PBS and incubated overnight at 4 °C in a humidified chamber. Cells were washed with PBST and incubated with a DyLight 594-conjugated secondary antibody (red) in PBS at room temperature in the dark. DAPI was used to stain the cell nuclei (blue).



### Western Blotting

**Image 2.** Western blot analysis of PPP2R5A expression in HeLa (A), NIH3T3 (B), H9C2 (C) whole cell lysates.