

Datasheet for ABIN7296664  
**anti-PRIM1 antibody (C-Term)**[Go to Product page](#)

## 2 Images

## Overview

Quantity:	100 µL
Target:	PRIM1
Binding Specificity:	C-Term
Reactivity:	Human, Mouse, Rabbit, Cow
Host:	Rabbit
Clonality:	Polyclonal
Conjugate:	This PRIM1 antibody is un-conjugated
Application:	Western Blotting (WB), Immunohistochemistry (IHC)

## Product Details

Immunogen:	KLH-conjugated synthetic peptide encompassing a sequence within the C-term region of human PRIM1.
Specificity:	Recognizes endogenous levels of PRIM1 protein.
Characteristics:	Rabbit polyclonal antibody to PRIM1
Purification:	The antibody was purified by immunogen affinity chromatography.

## Target Details

Target:	PRIM1
Alternative Name:	PRIM1 ( <a href="#">PRIM1 Products</a> )
Background:	DNA primase small subunit, DNA primase 49 kDa subunit, p49

## Target Details

Gene ID:	5557, 19075
UniProt:	<a href="#">P49642</a> , <a href="#">P20664</a>
Pathways:	<a href="#">Telomere Maintenance</a> , <a href="#">Mitotic G1-G1/S Phases</a> , <a href="#">DNA Replication</a> , <a href="#">Synthesis of DNA</a> , <a href="#">SARS-CoV-2 Protein Interactome</a>

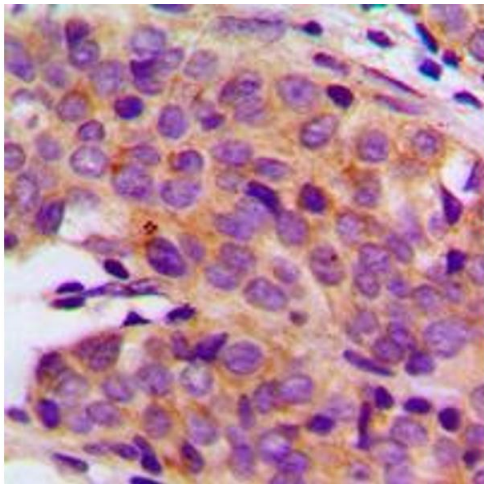
## Application Details

Application Notes:	WB (1:500 - 1:1000), IH (1:100 - 1:200)
Restrictions:	For Research Use only

## Handling

Format:	Liquid
Buffer:	Liquid in 0.42 % Potassium phosphate, 0.87 % Sodium chloride, pH 7.3, 30 % glycerol, and 0.01 % sodium azide.
Preservative:	Sodium azide
Precaution of Use:	This product contains Sodium azide: a POISONOUS AND HAZARDOUS SUBSTANCE which should be handled by trained staff only.
Storage:	-20 °C
Storage Comment:	Shipped at 4°C. Upon delivery aliquot and store at -20°C for one year. Avoid freeze/thaw cycles.
Expiry Date:	12 months

## Images



### Immunohistochemistry

**Image 1.** Immunohistochemical analysis of PRIM1 staining in human breast cancer formalin fixed paraffin embedded tissue section. The section was pre-treated using heat mediated antigen retrieval with sodium citrate buffer (pH 6.0). The section was then incubated with the antibody at room temperature and detected using an HRP conjugated compact polymer system. DAB was used as the chromogen. The section was then counterstained with

haematoxylin and mounted with DPX.

Western Blotting

**Image 2.** Western blot analysis of PRIM1 expression in HeLa (A), Raw264.7 (B) whole cell lysates.

