



Datasheet for ABIN7296690
anti-PKN1 antibody (Center)



[Go to Product page](#)

2 Images

Overview

Quantity:	100 µL
Target:	PKN1
Binding Specificity:	Center
Reactivity:	Human, Mouse, Cow, Monkey
Host:	Rabbit
Clonality:	Polyclonal
Conjugate:	This PKN1 antibody is un-conjugated
Application:	Western Blotting (WB), Immunofluorescence (IF), Immunochromatography (IC)

Product Details

Immunogen:	KLH-conjugated synthetic peptide encompassing a sequence within the center region of human PKN1.
Specificity:	Recognizes endogenous levels of PKN1 protein.
Characteristics:	Rabbit polyclonal antibody to PKN1
Purification:	The antibody was purified by immunogen affinity chromatography.

Target Details

Target:	PKN1
Alternative Name:	PKN1 (PKN1 Products)
Background:	PAK1, PKN, PRK1, PRKCL1, Serine/threonine-protein kinase N1, Protease-activated kinase 1,

Target Details

PAK-1, Protein kinase C-like 1, Protein kinase C-like PKN, Protein kinase PKN-alpha, Protein-kinase C-related kinase 1, Serine-threonine protein kinase N

Gene ID: 5585, 320795

UniProt: [Q16512](#), [P70268](#)

Application Details

Application Notes: WB (1:500 - 1:1000), IF/IC (1:100 - 1:500)

Restrictions: For Research Use only

Handling

Format: Liquid

Buffer: Liquid in 0.42 % Potassium phosphate, 0.87 % Sodium chloride, pH 7.3, 30 % glycerol, and 0.01 % sodium azide.

Preservative: Sodium azide

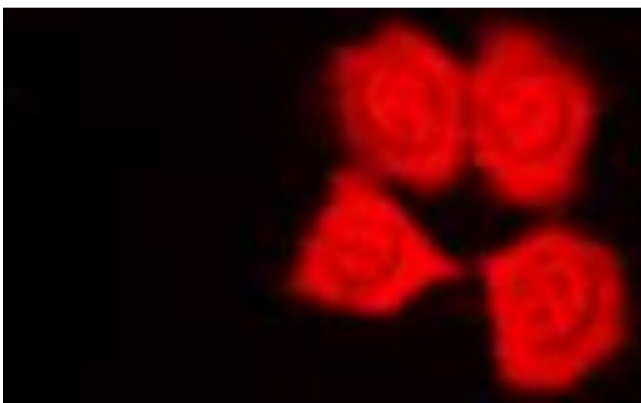
Precaution of Use: This product contains Sodium azide: a POISONOUS AND HAZARDOUS SUBSTANCE which should be handled by trained staff only.

Storage: -20 °C

Storage Comment: Shipped at 4°C. Upon delivery aliquot and store at -20°C for one year. Avoid freeze/thaw cycles.

Expiry Date: 12 months

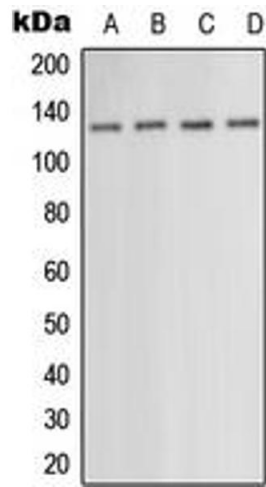
Images



Immunofluorescence

Image 1. Immunofluorescent analysis of PKN1 staining in HepG2 cells. Formalin-fixed cells were permeabilized with 0.1% Triton X-100 in TBS for 5-10 minutes and blocked with 3% BSA-PBS for 30 minutes at room temperature. Cells were probed with the primary antibody in 3% BSA-PBS and incubated overnight at 4 °C in a humidified chamber. Cells were washed with PBST and incubated with a DyLight 594-conjugated secondary antibody (red) in PBS at room

temperature in the dark. DAPI was used to stain the cell nuclei (blue).



Western Blotting

Image 2. Western blot analysis of PKN1 expression in HEK293T (A), HepG2 (B), SP2/0 (C), NIH3T3 (D) whole cell lysates.