

Datasheet for ABIN7296696  
**anti-GBA2 antibody (Center)**[Go to Product page](#)

## 2 Images

## Overview

Quantity:	100 µL
Target:	GBA2
Binding Specificity:	Center
Reactivity:	Human
Host:	Rabbit
Clonality:	Polyclonal
Conjugate:	This GBA2 antibody is un-conjugated
Application:	Western Blotting (WB), Immunofluorescence (IF), Immunochromatography (IC)

## Product Details

Immunogen:	KLH-conjugated synthetic peptide encompassing a sequence within the center region of human Beta-glucosidase 2.
Specificity:	Recognizes endogenous levels of Beta-glucosidase 2 protein.
Characteristics:	Rabbit polyclonal antibody to Beta-glucosidase 2
Purification:	The antibody was purified by immunogen affinity chromatography.

## Target Details

Target:	GBA2
Alternative Name:	beta-Glucosidase 2 ( <a href="#">GBA2 Products</a> )
Background:	G19P1, Glucosidase 2 subunit beta, 80K-H protein, Glucosidase II subunit beta, Protein kinase C

## Target Details

substrate 60.1 kDa protein heavy chain, PKCSH

Gene ID: 5589

UniProt: [P14314](#)

## Application Details

Application Notes: WB (1:500 - 1:1000), IF/IC (1:100 - 1:500)

Restrictions: For Research Use only

## Handling

Format: Liquid

Buffer: Liquid in 0.42 % Potassium phosphate, 0.87 % Sodium chloride, pH 7.3, 30 % glycerol, and 0.01 % sodium azide.

Preservative: Sodium azide

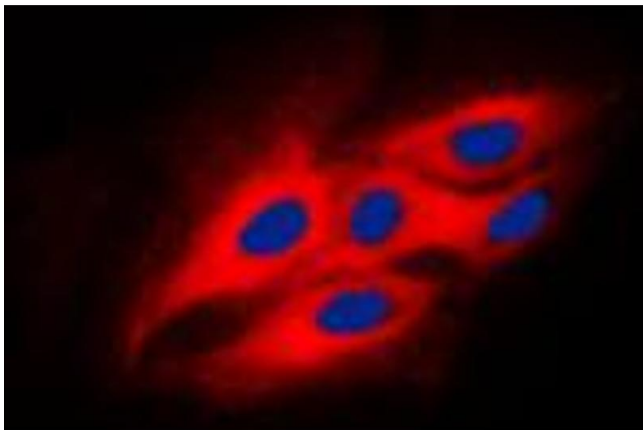
Precaution of Use: This product contains Sodium azide: a POISONOUS AND HAZARDOUS SUBSTANCE which should be handled by trained staff only.

Storage: -20 °C

Storage Comment: Shipped at 4°C. Upon delivery aliquot and store at -20°C for one year. Avoid freeze/thaw cycles.

Expiry Date: 12 months

## Images



### Immunofluorescence

**Image 1.** Immunofluorescent analysis of Beta-glucosidase 2 staining in HeLa cells. Formalin-fixed cells were permeabilized with 0.1% Triton X-100 in TBS for 5-10 minutes and blocked with 3% BSA-PBS for 30 minutes at room temperature. Cells were probed with the primary antibody in 3% BSA-PBS and incubated overnight at 4 °C in a humidified chamber. Cells were washed with PBST and incubated with a DyLight 594-conjugated secondary antibody (red) in PBS at room temperature in the dark. DAPI

was used to stain the cell nuclei (blue).

Western Blotting

**Image 2.** Western blot analysis of Beta-glucosidase 2 expression in A431 (A), HeLa (B), A549 (C) whole cell lysates.

