

Datasheet for ABIN7296700  
**anti-PRKDC antibody (C-Term)**



[Go to Product page](#)

3 Images

## Overview

Quantity:	100 µL
Target:	PRKDC
Binding Specificity:	C-Term
Reactivity:	Human, Mouse
Host:	Rabbit
Clonality:	Polyclonal
Conjugate:	This PRKDC antibody is un-conjugated
Application:	Western Blotting (WB), Immunohistochemistry (IHC), Immunofluorescence (IF), Immunochromatography (IC)

## Product Details

Immunogen:	KLH-conjugated synthetic peptide encompassing a sequence within the C-term region of human DNA-PKcs.
Specificity:	Recognizes endogenous levels of DNA-PKcs protein.
Characteristics:	Rabbit polyclonal antibody to DNA-PKcs
Purification:	The antibody was purified by immunogen affinity chromatography.

## Target Details

Target:	PRKDC
Alternative Name:	DNA-PKcs ( <a href="#">PRKDC Products</a> )

## Target Details

---

Background:	HYRC, HYRC1, DNA-dependent protein kinase catalytic subunit, DNA-PK catalytic subunit, DNA-PKcs, DNPK1, p460
Gene ID:	5591, 19090
UniProt:	<a href="#">P78527</a> , <a href="#">P97313</a>
Pathways:	<a href="#">DNA Damage Repair</a> , <a href="#">Production of Molecular Mediator of Immune Response</a>

## Application Details

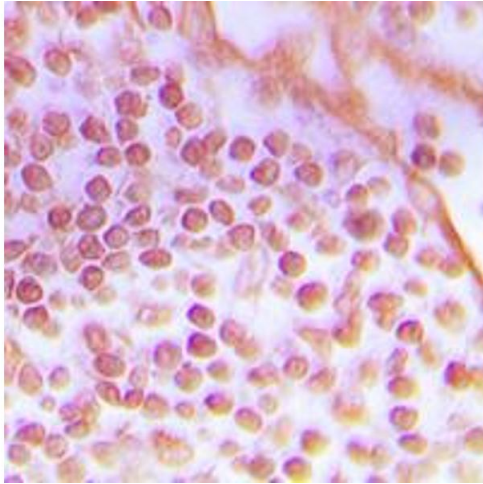
---

Application Notes:	WB (1:500 - 1:1000), IH (1:100 - 1:200), IF/IC (1:100 - 1:500)
Restrictions:	For Research Use only

## Handling

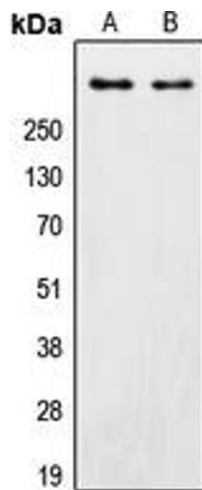
---

Format:	Liquid
Buffer:	Liquid in 0.42 % Potassium phosphate, 0.87 % Sodium chloride, pH 7.3, 30 % glycerol, and 0.01 % sodium azide.
Preservative:	Sodium azide
Precaution of Use:	This product contains Sodium azide: a POISONOUS AND HAZARDOUS SUBSTANCE which should be handled by trained staff only.
Storage:	-20 °C
Storage Comment:	Shipped at 4°C. Upon delivery aliquot and store at -20°C for one year. Avoid freeze/thaw cycles.
Expiry Date:	12 months



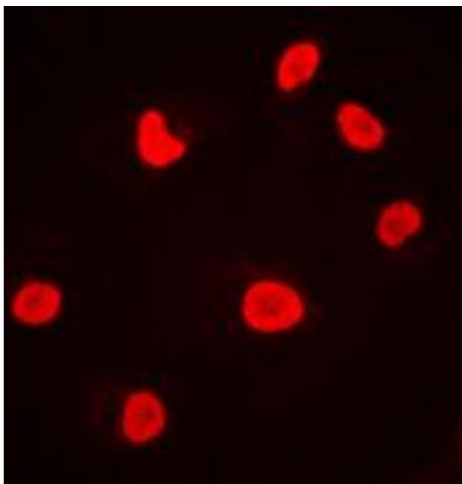
### Immunohistochemistry

**Image 1.** Immunohistochemical analysis of DNA-PKcs staining in human tonsil formalin fixed paraffin embedded tissue section. The section was pre-treated using heat mediated antigen retrieval with sodium citrate buffer (pH 6.0). The section was then incubated with the antibody at room temperature and detected using an HRP conjugated compact polymer system. DAB was used as the chromogen. The section was then counterstained with haematoxylin and mounted with DPX.



### Western Blotting

**Image 2.** Western blot analysis of DNA-PKcs expression in HeLa (A), MCF7 (B) whole cell lysates.



### Immunofluorescence

**Image 3.** Immunofluorescent analysis of DNA-PKcs staining in MCF7 cells. Formalin-fixed cells were permeabilized with 0.1% Triton X-100 in TBS for 5-10 minutes and blocked with 3% BSA-PBS for 30 minutes at room temperature. Cells were probed with the primary antibody in 3% BSA-PBS and incubated overnight at 4 °C in a humidified chamber. Cells were washed with PBST and incubated with a DyLight 594-conjugated secondary antibody (red) in PBS at room temperature in the dark. DAPI was used to stain the cell nuclei (blue).