



Datasheet for ABIN7296736
anti-PSMD2 antibody (N-Term)



[Go to Product page](#)

2 Images

Overview

Quantity:	100 µL
Target:	PSMD2
Binding Specificity:	N-Term
Reactivity:	Human, Cow
Host:	Rabbit
Clonality:	Polyclonal
Conjugate:	This PSMD2 antibody is un-conjugated
Application:	Western Blotting (WB), Immunofluorescence (IF), Immunoprecipitation (IP), Immunochromatography (IC)

Product Details

Immunogen:	KLH-conjugated synthetic peptide encompassing a sequence within the N-term region of human PSMD2.
Specificity:	Recognizes endogenous levels of PSMD2 protein.
Characteristics:	Rabbit polyclonal antibody to PSMD2
Purification:	The antibody was purified by immunogen affinity chromatography.

Target Details

Target:	PSMD2
Alternative Name:	PSMD2 (PSMD2 Products)

Target Details

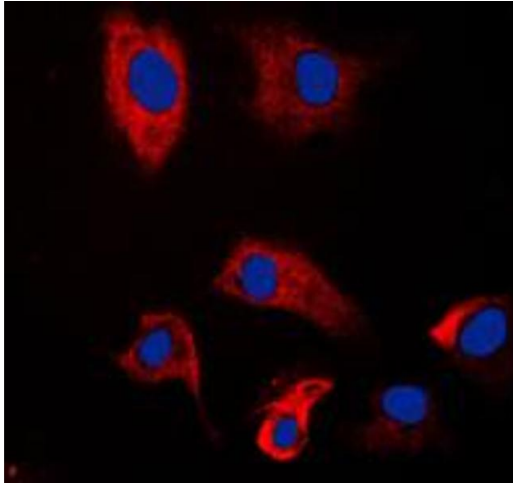
Background:	TRAP2, 26S proteasome non-ATPase regulatory subunit 2, 26S proteasome regulatory subunit RPN1, 26S proteasome regulatory subunit S2, 26S proteasome subunit p97, Protein 55.11, Tumor necrosis factor type 1 receptor-associated protein 2
Gene ID:	5708
UniProt:	Q13200
Pathways:	Mitotic G1-G1/S Phases , DNA Replication , Synthesis of DNA , Ubiquitin Proteasome Pathway

Application Details

Application Notes:	WB (1:500 - 1:1000), IF/IC (1:100 - 1:500), IP (1:10 - 1:100)
Restrictions:	For Research Use only

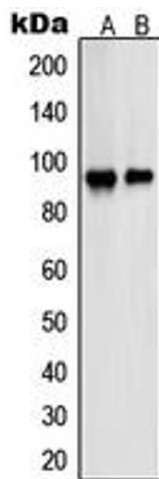
Handling

Format:	Liquid
Buffer:	Liquid in 0.42 % Potassium phosphate, 0.87 % Sodium chloride, pH 7.3, 30 % glycerol, and 0.01 % sodium azide.
Preservative:	Sodium azide
Precaution of Use:	This product contains Sodium azide: a POISONOUS AND HAZARDOUS SUBSTANCE which should be handled by trained staff only.
Storage:	-20 °C
Storage Comment:	Shipped at 4°C. Upon delivery aliquot and store at -20°C for one year. Avoid freeze/thaw cycles.
Expiry Date:	12 months



Immunofluorescence

Image 1. Immunofluorescent analysis of PSMD2 staining in HeLa cells. Formalin-fixed cells were permeabilized with 0.1% Triton X-100 in TBS for 5-10 minutes and blocked with 3% BSA-PBS for 30 minutes at room temperature. Cells were probed with the primary antibody in 3% BSA-PBS and incubated overnight at 4 °C in a humidified chamber. Cells were washed with PBST and incubated with a DyLight 594-conjugated secondary antibody (red) in PBS at room temperature in the dark. DAPI was used to stain the cell nuclei (blue).



Western Blotting

Image 2. Western blot analysis of PSMD2 expression in A431 (A), HeLa (B) whole cell lysates.