

Datasheet for ABIN7296738
anti-PSMD2 antibody (N-Term)[Go to Product page](#)

2 Images

Overview

Quantity:	100 µL
Target:	PSMD2
Binding Specificity:	N-Term
Reactivity:	Human, Mouse, Rat, Cow, Monkey
Host:	Rabbit
Clonality:	Polyclonal
Conjugate:	This PSMD2 antibody is un-conjugated
Application:	Western Blotting (WB), Immunohistochemistry (IHC)

Product Details

Immunogen:	KLH-conjugated synthetic peptide encompassing a sequence within the N-term region of human PSMD2.
Specificity:	Recognizes endogenous levels of PSMD2 protein.
Characteristics:	Rabbit polyclonal antibody to PSMD2
Purification:	The antibody was purified by immunogen affinity chromatography.

Target Details

Target:	PSMD2
Alternative Name:	PSMD2 (PSMD2 Products)
Background:	TRAP2, 26S proteasome non-ATPase regulatory subunit 2, 26S proteasome regulatory subunit

Target Details

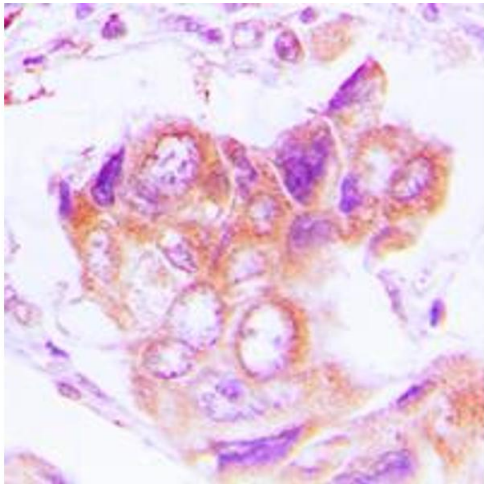
	RPN1, 26S proteasome regulatory subunit S2, 26S proteasome subunit p97, Protein 55.11, Tumor necrosis factor type 1 receptor-associated protein 2
Gene ID:	5708, 21762, 287984
UniProt:	Q13200 , Q8VDM4 , Q4FZT9
Pathways:	Mitotic G1-G1/S Phases , DNA Replication , Synthesis of DNA , Ubiquitin Proteasome Pathway

Application Details

Application Notes:	WB (1:500 - 1:1000), IH (1:100 - 1:200)
Restrictions:	For Research Use only

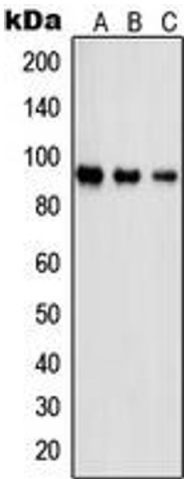
Handling

Format:	Liquid
Buffer:	Liquid in 0.42 % Potassium phosphate, 0.87 % Sodium chloride, pH 7.3, 30 % glycerol, and 0.01 % sodium azide.
Preservative:	Sodium azide
Precaution of Use:	This product contains Sodium azide: a POISONOUS AND HAZARDOUS SUBSTANCE which should be handled by trained staff only.
Storage:	-20 °C
Storage Comment:	Shipped at 4°C. Upon delivery aliquot and store at -20°C for one year. Avoid freeze/thaw cycles.
Expiry Date:	12 months



Immunohistochemistry

Image 1. Immunohistochemical analysis of PSMD2 staining in human lung cancer formalin fixed paraffin embedded tissue section. The section was pre-treated using heat mediated antigen retrieval with sodium citrate buffer (pH 6.0). The section was then incubated with the antibody at room temperature and detected using an HRP conjugated compact polymer system. DAB was used as the chromogen. The section was then counterstained with haematoxylin and mounted with DPX.



Western Blotting

Image 2. Western blot analysis of PSMD2 expression in Jurkat (A), A431 (B), NIH3T3 (C) whole cell lysates.