



[Go to Product page](#)

Datasheet for ABIN7296740
anti-PSMD3 antibody (Center)

1 Image

Overview

Quantity:	100 µL
Target:	PSMD3
Binding Specificity:	Center
Reactivity:	Human, Mouse, Rat, Cow, Monkey
Host:	Rabbit
Clonality:	Polyclonal
Conjugate:	This PSMD3 antibody is un-conjugated
Application:	Western Blotting (WB)

Product Details

Immunogen:	KLH-conjugated synthetic peptide encompassing a sequence within the center region of human PSMD3.
Specificity:	Recognizes endogenous levels of PSMD3 protein.
Characteristics:	Rabbit polyclonal antibody to PSMD3
Purification:	The antibody was purified by immunogen affinity chromatography.

Target Details

Target:	PSMD3
Alternative Name:	PSMD3 (PSMD3 Products)
Background:	26S proteasome non-ATPase regulatory subunit 3, 26S proteasome regulatory subunit RPN3,

Target Details

26S proteasome regulatory subunit S3, Proteasome subunit p58

Gene ID: 5709, 22123

UniProt: [O43242](#), [P14685](#)

Pathways: [Mitotic G1-G1/S Phases](#), [DNA Replication](#), [Synthesis of DNA](#), [Ubiquitin Proteasome Pathway](#)

Application Details

Application Notes: WB (1:500 - 1:1000)

Restrictions: For Research Use only

Handling

Format: Liquid

Buffer: Liquid in 0.42 % Potassium phosphate, 0.87 % Sodium chloride, pH 7.3, 30 % glycerol, and 0.01 % sodium azide.

Preservative: Sodium azide

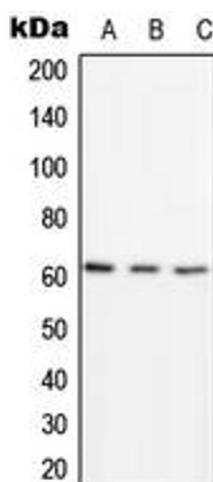
Precaution of Use: This product contains Sodium azide: a POISONOUS AND HAZARDOUS SUBSTANCE which should be handled by trained staff only.

Storage: -20 °C

Storage Comment: Shipped at 4°C. Upon delivery aliquot and store at -20°C for one year. Avoid freeze/thaw cycles.

Expiry Date: 12 months

Images



Western Blotting

Image 1. Western blot analysis of PSMD3 expression in HEK293T (A), Raw264.7 (B), PC12 (C) whole cell lysates.