

Datasheet for ABIN7296742  
**anti-PSMD12 antibody (Center)**[Go to Product page](#)

## 2 Images

## Overview

Quantity:	100 µL
Target:	PSMD12
Binding Specificity:	Center
Reactivity:	Human, Mouse, Rat, Cow
Host:	Rabbit
Clonality:	Polyclonal
Conjugate:	This PSMD12 antibody is un-conjugated
Application:	Western Blotting (WB), Immunohistochemistry (IHC)

## Product Details

Immunogen:	KLH-conjugated synthetic peptide encompassing a sequence within the center region of human PSMD12.
Specificity:	Recognizes endogenous levels of PSMD12 protein.
Characteristics:	Rabbit polyclonal antibody to PSMD12
Purification:	The antibody was purified by immunogen affinity chromatography.

## Target Details

Target:	PSMD12
Alternative Name:	PSMD12 ( <a href="#">PSMD12 Products</a> )
Background:	26S proteasome non-ATPase regulatory subunit 12, 26S proteasome regulatory subunit RPN5,

## Target Details

	26S proteasome regulatory subunit p55
Gene ID:	5718, 66997
UniProt:	<a href="#">O00232</a> , <a href="#">Q9D8W5</a>
Pathways:	<a href="#">Mitotic G1-G1/S Phases</a> , <a href="#">DNA Replication</a> , <a href="#">Synthesis of DNA</a> , <a href="#">Ubiquitin Proteasome Pathway</a>

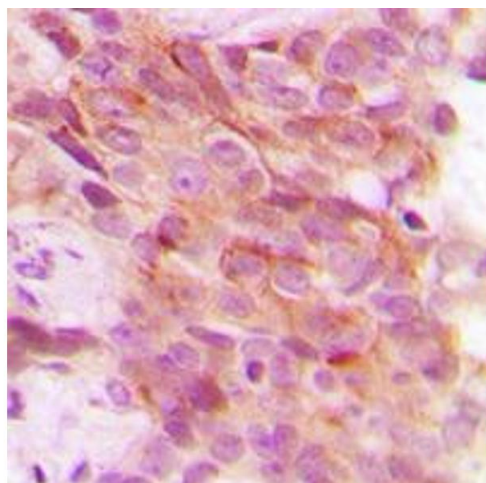
## Application Details

Application Notes:	WB (1:500 - 1:1000), IH (1:100 - 1:200)
Restrictions:	For Research Use only

## Handling

Format:	Liquid
Buffer:	Liquid in 0.42 % Potassium phosphate, 0.87 % Sodium chloride, pH 7.3, 30 % glycerol, and 0.01 % sodium azide.
Preservative:	Sodium azide
Precaution of Use:	This product contains Sodium azide: a POISONOUS AND HAZARDOUS SUBSTANCE which should be handled by trained staff only.
Storage:	-20 °C
Storage Comment:	Shipped at 4°C. Upon delivery aliquot and store at -20°C for one year. Avoid freeze/thaw cycles.
Expiry Date:	12 months

## Images



### Immunohistochemistry

**Image 1.** Immunohistochemical analysis of PSMD12 staining in human breast cancer formalin fixed paraffin embedded tissue section. The section was pre-treated using heat mediated antigen retrieval with sodium citrate buffer (pH 6.0). The section was then incubated with the antibody at room temperature and detected using an HRP conjugated compact polymer system. DAB was used as the chromogen. The section was then counterstained with

haematoxylin and mounted with DPX.

Western Blotting

**Image 2.** Western blot analysis of PSMD12 expression in A431 (A), COLO320 (B), HeLa (C) whole cell lysates.

