

Datasheet for ABIN7296782
anti-MOK antibody (Center)

2 Images

[Go to Product page](#)

Overview

Quantity:	100 µL
Target:	MOK
Binding Specificity:	Center
Reactivity:	Human, Monkey
Host:	Rabbit
Clonality:	Polyclonal
Conjugate:	This MOK antibody is un-conjugated
Application:	Western Blotting (WB), Immunoprecipitation (IP), Immunofluorescence (IF), Immunochromatography (IC)

Product Details

Immunogen:	KLH-conjugated synthetic peptide encompassing a sequence within the center region of human MOK.
Specificity:	Recognizes endogenous levels of MOK protein.
Characteristics:	Rabbit polyclonal antibody to MOK
Purification:	The antibody was purified by immunogen affinity chromatography.

Target Details

Target:	MOK
Alternative Name:	MOK (MOK Products)

Target Details

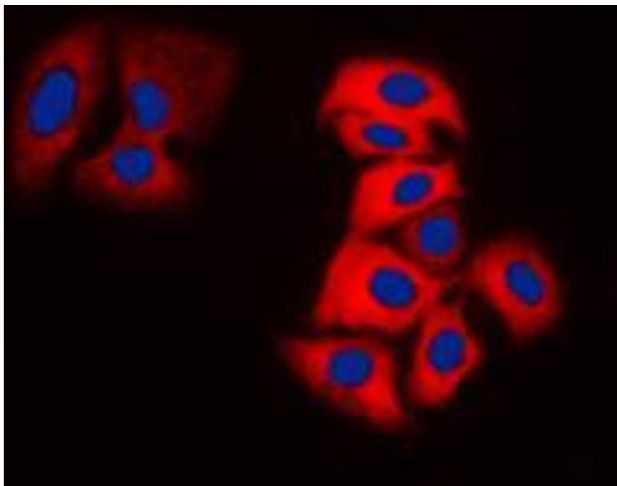
Background:	RAGE, RAGE1, MAPK/MAK/MRK overlapping kinase, MOK protein kinase, Renal tumor antigen 1, RAGE-1
Gene ID:	5891
UniProt:	Q9UQ07
Pathways:	S100 Proteins

Application Details

Application Notes:	WB (1:500 - 1:1000), IF/IC (1:100 - 1:500), IP (1:10 - 1:100)
Restrictions:	For Research Use only

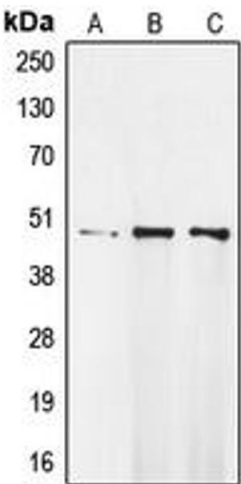
Handling

Format:	Liquid
Buffer:	Liquid in 0.42 % Potassium phosphate, 0.87 % Sodium chloride, pH 7.3, 30 % glycerol, and 0.01 % sodium azide.
Preservative:	Sodium azide
Precaution of Use:	This product contains Sodium azide: a POISONOUS AND HAZARDOUS SUBSTANCE which should be handled by trained staff only.
Storage:	-20 °C
Storage Comment:	Shipped at 4°C. Upon delivery aliquot and store at -20°C for one year. Avoid freeze/thaw cycles.
Expiry Date:	12 months



Immunofluorescence

Image 1. Immunofluorescent analysis of MOK staining in MDAMB231 cells. Formalin-fixed cells were permeabilized with 0.1% Triton X-100 in TBS for 5-10 minutes and blocked with 3% BSA-PBS for 30 minutes at room temperature. Cells were probed with the primary antibody in 3% BSA-PBS and incubated overnight at 4 °C in a humidified chamber. Cells were washed with PBST and incubated with a DyLight 594-conjugated secondary antibody (red) in PBS at room temperature in the dark. DAPI was used to stain the cell nuclei (blue).



Western Blotting

Image 2. Western blot analysis of MOK expression in Raji (A), MDAMB231 (B), A549 (C) whole cell lysates.